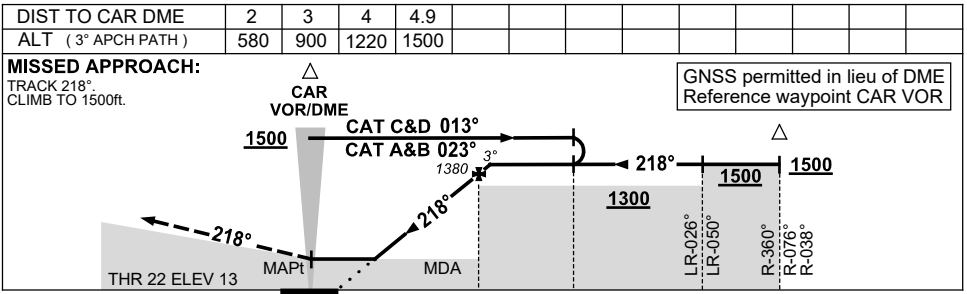
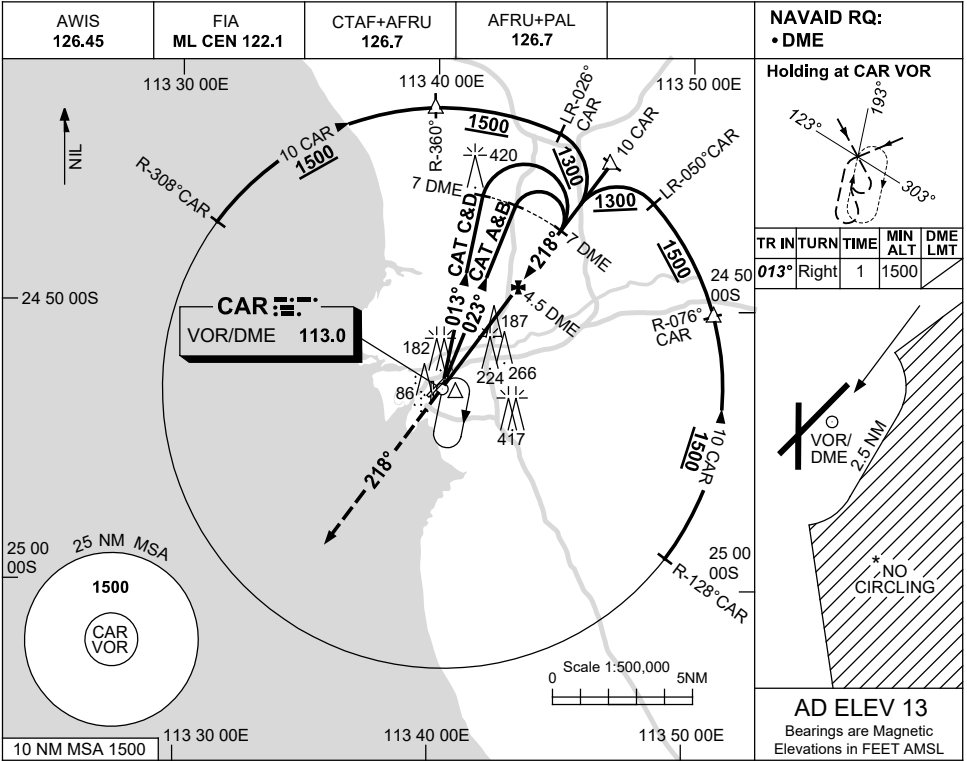


USE QNH

VOR-Z RWY 22
CARNARVON, WA (YCAR)

21 MAR 2024



CATEGORY	A	B	C	D
S-I VOR/DME	580 (567-3.2)			
CIRCLING*	670 (657-2.4)	760 (747-4.0)	810 (797-5.0)	
ALTERNATE	(1157-4.4)	(1247-6.0)	(1297-7.0)	

- NOTES**
- MAX IAS: INITIAL : 210KT.
 - * NO CIRCLING IN SECTOR EAST OF RWY 22 & RWY 36 BEYOND 2.5NM.

Changes: CIRCLING MINIMA, 420FT TOWER, 266FT TOWER.

CARV004-178