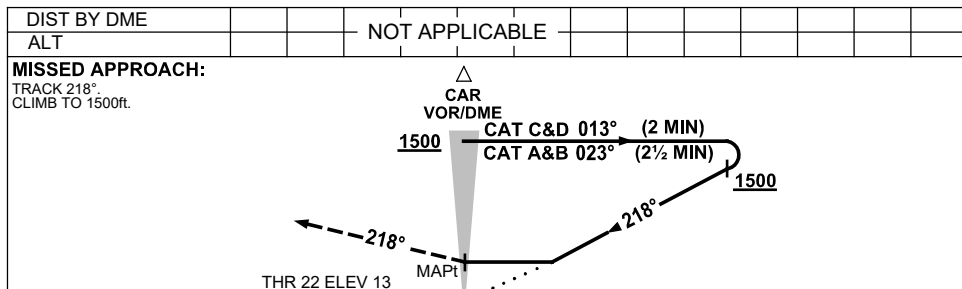
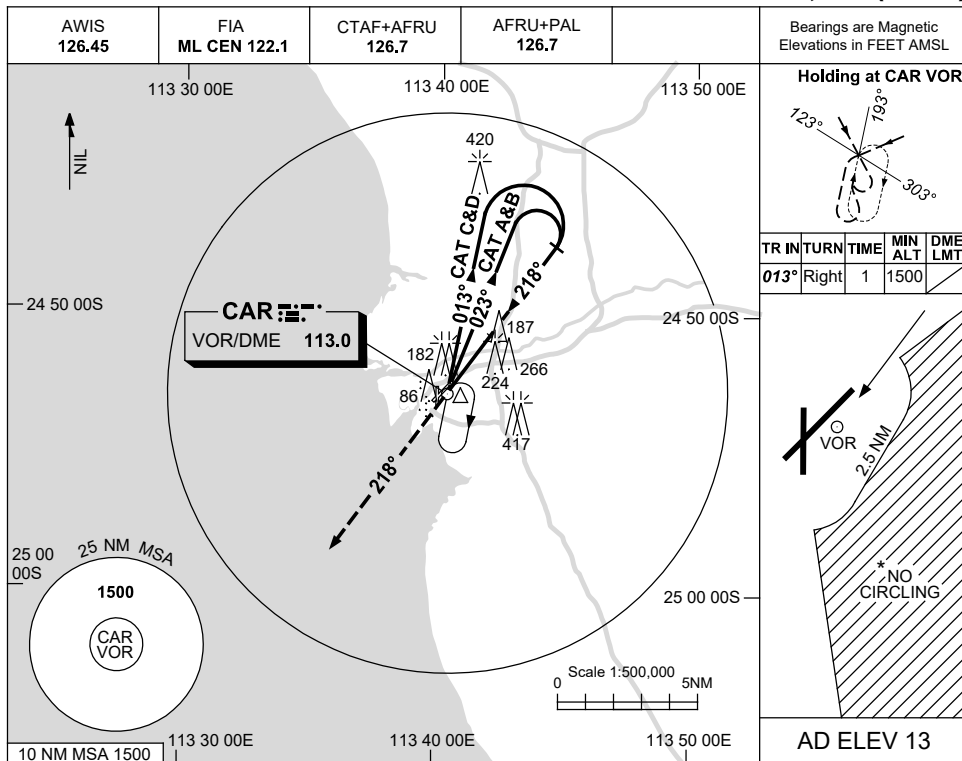


USE QNH

VOR-Y RWY 22
CARNARVON, WA (YCAR)

21 MAR 2024



NOTES

1. MAX IAS: INITIAL : 210KT.
- * 2. NO CIRCLING IN SECTOR EAST OF RWY 22 & RWY 36 BEYOND 2.5NM.

| CATEGORY | A | B | C | D |
|-----------|----------------------|----------------------|----------------------|---|
| S-I VOR | 630 (617-3.5) | | | |
| CIRCLING* | 670 (657-2.4) | 760 (747-4.0) | 810 (797-5.0) | |
| ALTERNATE | (1157-4.4) | (1247-6.0) | (1297-7.0) | |

Changes: CIRCLING MINIMA, REVERSAL ALT, 420FT TOWER, 266FT TOWER.

CARVO02-178