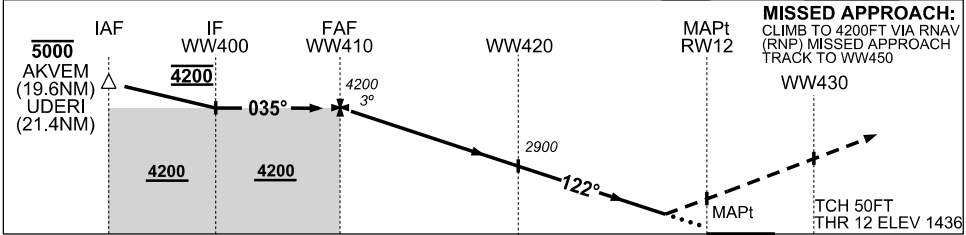
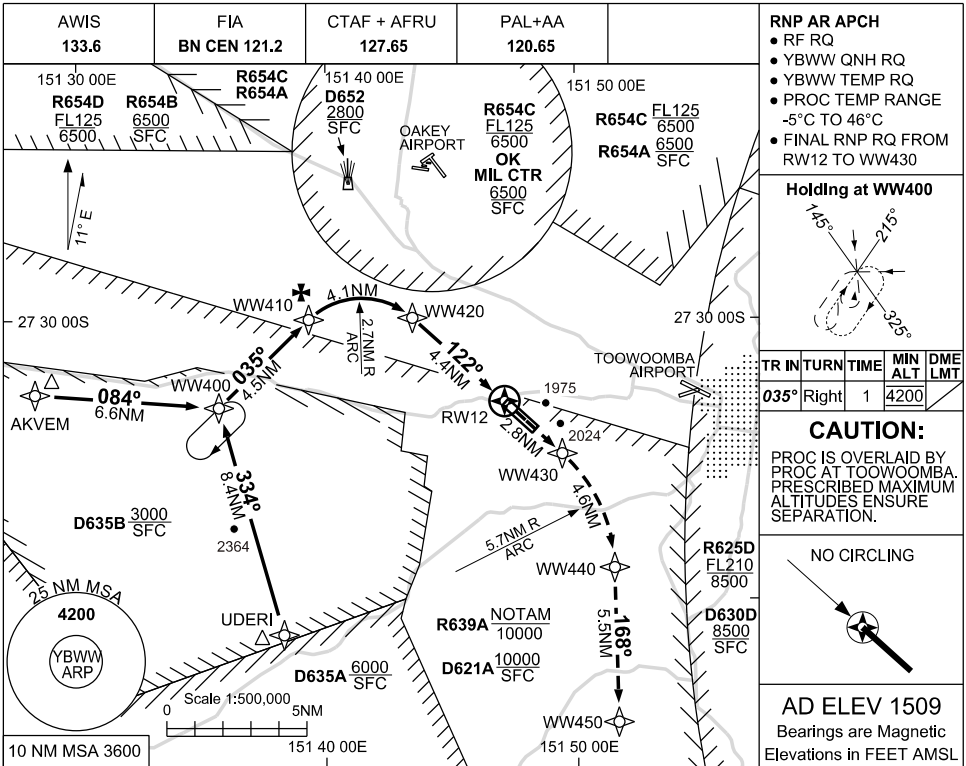


FOR CASA APPROVED OPERATORS ONLY

USE QNH  
RNP X RWY 12 (AR)  
BRISBANE WEST WELLCAMP, QLD (YBWW)

16 JUN 2022



- NOTES**
- MAX IAS:  
INITIAL UDERI : 220KT  
HOLDING WW400 : 200KT
  - TRANSITION TO MISSED APPROACH RNP FOR LATERAL GUIDANCE MUST NOT BE INITIATED PRIOR TO THE ALONG-TRACK POSITION OF THE DA/H
  - PAPI NOT COINCIDENT WITH VPA
  - PRD OPR HR VIA NOTAM EXCEPT D652 : H24 D635AB: HJ

CATEGORY	A	B	C	D
RNP (0.3)		1920 (484 - 2.6)		
RNP (0.23)		1820 (384 - 2.2)		
CIRCLING	NOT AUTHORISED			
ALTERNATE	(1419 - 4.4)		(1609 - 6.0)	(1609 - 7.0)

Changes: R654ABCD, OK MIL CTR

BWWGN04-171