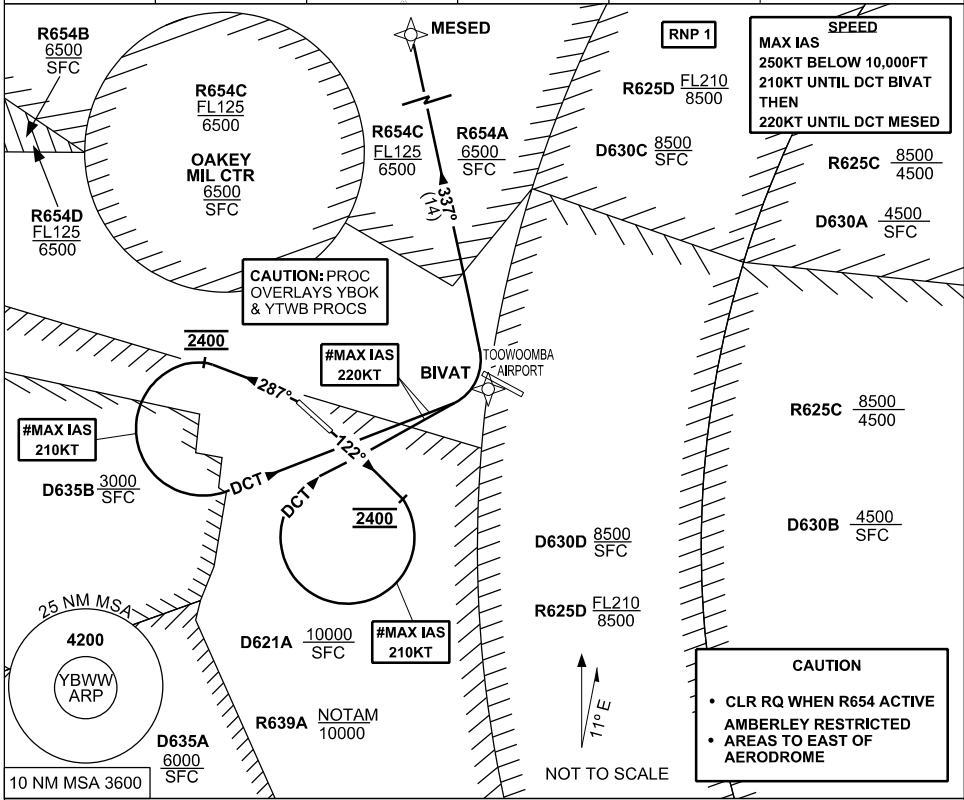


STANDARD INSTRUMENT DEPARTURE (SID) RWY NORTH (RNAV) BRISBANE WEST WELLCAMP, QLD (YBWW)

16 JUN 2022

AWIS 133.6	FIA BN CEN 121.2	CTAF+AFRU 127.65	PAL+AA 120.65	Bearings are Magnetic Elevations in FEET AMSL
---------------	---------------------	---------------------	------------------	--



MESED ONE DEPARTURE

RWY 12

- #MAX IAS 210KT** UNTIL tracking DCT BIVAT THEN 220KT UNTIL tracking DCT MESED
- GRAD 5% to 2400FT, thence 3.3%
- Track 122°
- **AT 2400FT** turn **RIGHT** track DCT to BIVAT
- Track 337° to MESED
- Intercept flight planned route

RWY 30

- #MAX IAS 210KT** UNTIL tracking DCT BIVAT THEN 220KT UNTIL tracking DCT MESED
- GRAD 6% to 2400FT, thence 3.3%
- **NOT BEFORE DER** turn **LEFT** Track 287°
- **AT 2400FT** turn **LEFT** track DCT to BIVAT
- Track 337° to MESED
- Intercept flight planned route

Changes: R654ABCD, OK MIL CTR

BWWDP05-171