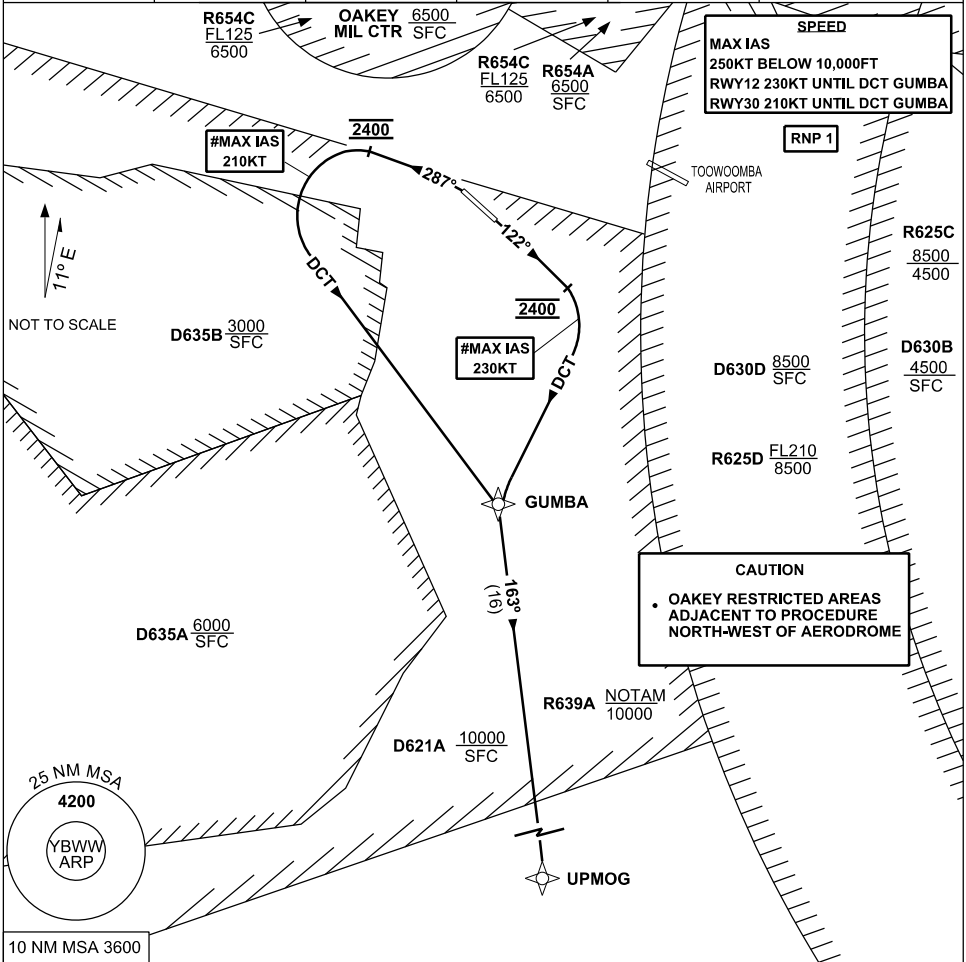


**STANDARD INSTRUMENT DEPARTURE (SID)  
RWYS SOUTH (RNAV)  
BRISBANE WEST WELLCAMP, QLD (YBWW)**

16 JUN 2022

|               |                     |                     |                  |  |
|---------------|---------------------|---------------------|------------------|--|
| AWIS<br>133.6 | FIA<br>BN CEN 121.2 | CTAF+AFRU<br>127.65 | PAL+AA<br>120.65 | Bearings are Magnetic<br>Elevations in FEET AMSL |
|---------------|---------------------|---------------------|------------------|--|



|   |   |
|---|---|
| <p><b>UPMOG ONE DEPARTURE</b></p> <p><b>RWY 12</b></p> <p># MAX IAS 230KT UNTIL tracking DCT GUMBA<br/>GRAD 5% to 2400FT, thence 3.3%</p> <ul style="list-style-type: none"> <li>Track 122°</li> <li>AT 2400FT turn <b>RIGHT</b> track DCT to GUMBA</li> <li>Track 163° to UPMOG</li> <li>Intercept flight planned route</li> </ul> | <p><b>RWY 30</b></p> <p># MAX IAS 210KT UNTIL tracking DCT GUMBA<br/>GRAD 6% to 2400FT, thence 3.3%</p> <ul style="list-style-type: none"> <li><b>NOT BEFORE DER</b> turn <b>LEFT</b> Track 287°</li> <li>AT 2400FT turn <b>LEFT</b> track DCT to GUMBA</li> <li>Track 163° to UPMOG</li> <li>Intercept flight planned route</li> </ul> |
|---|---|

Changes: R654ABCD, OK MIL CTR

BWWDP04-171