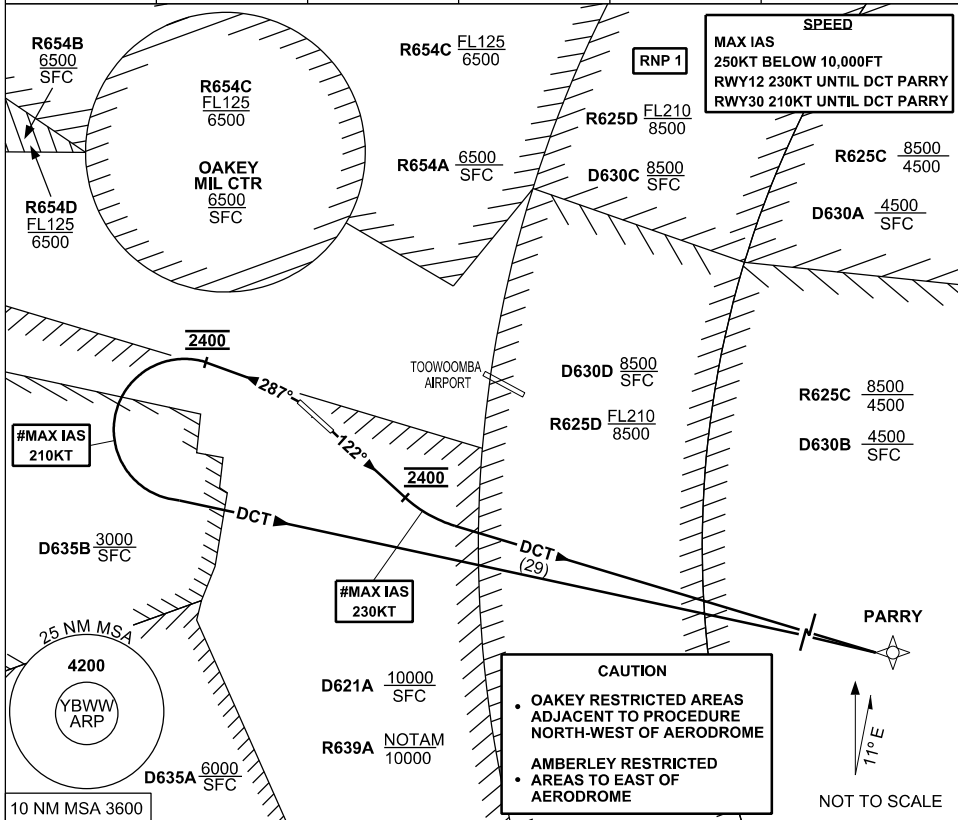


STANDARD INSTRUMENT DEPARTURE (SID) RWYS EAST (JET) (RNAV) BRISBANE WEST WELLCAMP, QLD (YBWW)

16 JUN 2022

AWIS 133.6	FIA BN CEN 121.2	CTAF+AFRU 127.65	PAL+AA 120.65		Bearings are Magnetic Elevations in FEET AMSL
---------------	---------------------	---------------------	------------------	--	--



PARRY ONE DEPARTURE

RWY 12

- # MAX IAS 230KT UNTIL tracking DCT PARRY
- GRAD 5% to 2400FT, thence 3.3%
- Track 122°
- AT 2400FT turn **LEFT** track DCT to PARRY
- Intercept flight planned route

RWY 30

- # MAX IAS 210KT UNTIL tracking DCT PARRY
- GRAD 6% to 2400FT, thence 3.3%
- **NOT BEFORE DER** turn **LEFT** track 287°
- AT 2400FT turn **LEFT** track DCT to PARRY
- Intercept flight planned route

Changes: R654ABCD, OK MIL CTR

BWWDP02-171