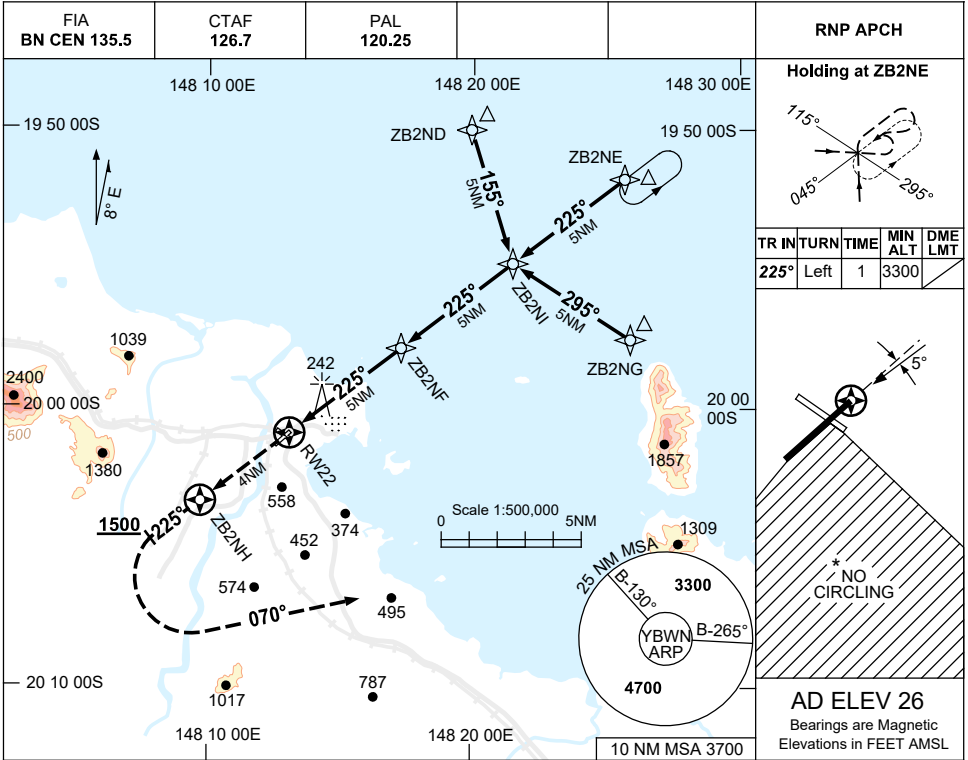


USE QNH

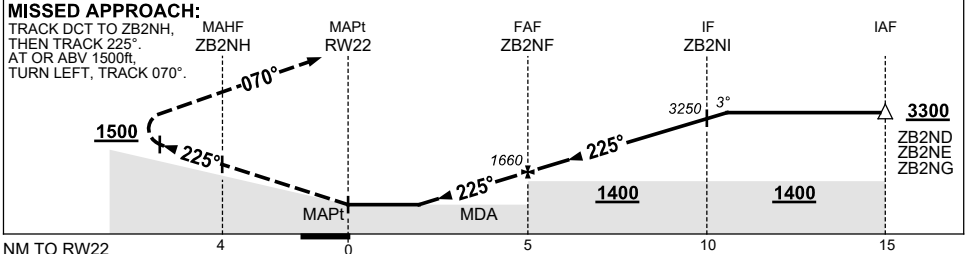
RNP N

BOWEN, QLD (YBWN)

21 MAR 2024



NM TO NEXT WPT	RW22	2.8	3	3.2	4	ZB2NF	1	2	3	4	ZB2NI	0.2
ALT (3° APCH PATH)		970	1020	1070	1340	1660	1980	2290	2610	2930	3250	3300



NOTES

CATEGORY	A	B	C	D
CIRCLING *	970 (944-2.4)	1070 (1044-4.0)	NOT APPLICABLE	
ALTERNATE	(1444-4.4)	(1544-6.0)	NOT APPLICABLE	

- MAX IAS:
 INITIAL : 210KT.
 MAP TURN : 190KT.
- NO CIRCLING IN SECT'S OF RWY 04/22 AND RWY 12/30.
- COLOUR: SEE SPEC NOTICES.

Changes: WPT NAMING CONVENTION, MISSED APCH TEXT, Editorial.

BWNGN02-178