

**STANDARD INSTRUMENT ARRIVAL (STAR)
VOMPA TWO BRAVO ARRIVAL (RNAV)
TOWNSVILLE/TOWNSVILLE INTL, QLD (YBTL)**

30 NOV 2023

ATIS 114.1 133.5 276	ACD 128.1	SMC 121.8 264.6	TWR 118.3	APP/DEP 126.8	FIA (AH) BN CEN 120.55	CTAF+AFRU (AH) AFRU+PAL (AH) 118.3	AWIS (AH) 133.5	Bearings are Magnetic Elevations in FEET AMSL
-------------------------	--------------	--------------------	--------------	------------------	------------------------------	--	--------------------	--

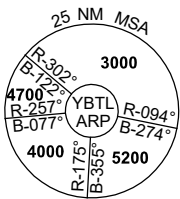
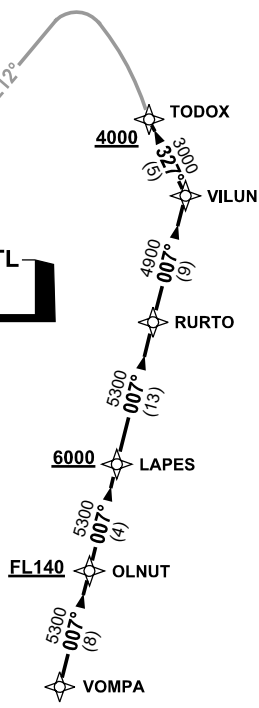
NOT TO SCALE



**SPEED
MAX IAS 250KT
BELOW 10,000ft**

RNP 1

TOWNSVILLE/TOWNSVILLE INTL
TL VOR/DME 114.1



10 NM MSA 3600

VOMPA TWO ARRIVAL

RWY 19 BRAVO:

- From VOMPA track 007° to OLNUT
Cross OLNUT AT or ABV FL140
- Track 007° to LAPES
Cross LAPES AT or ABV 6000ft
- Track 007° to RURTO
- Track 007° to VILUL
- Turn **LEFT**, track 327° to TODOX
Cross TODOX AT or ABV 4000ft
- From TODOX track via VOR RWY 19

**COMMUNICATIONS FAILURE: PROCEDURE IN IMC
IF ABLE CTC TL APP 07-4752-1207**

- Squawk 7600, comply with vertical navigation requirements, but not below MSA.
- Track via the latest STAR clearance to the nominated runway, then fly the most suitable approach in accordance with ERSA EMERG Section 1.5.

