

STANDARD INSTRUMENT ARRIVAL (STAR)
IGIKI TWO ALPHA ARRIVAL (RNAV)

TOWNSVILLE/TOWNSVILLE INTL, QLD (YBTL)

30 NOV 2023

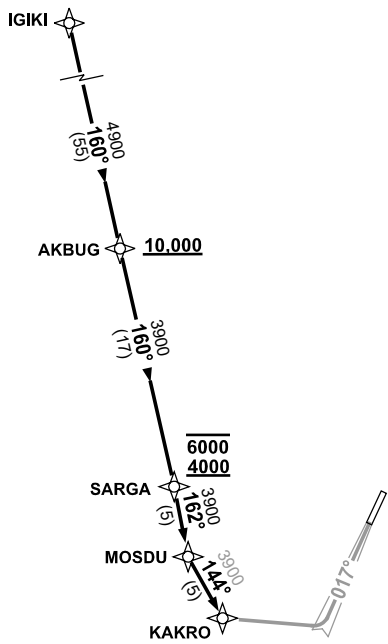
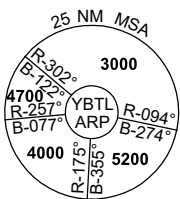
ATIS 114.1 133.5 276	ACD 128.1	SMC 121.8 264.6	TWR 118.3	APP/DEP 126.8	FIA (AH) BN CEN 120.55	CTAF+AFRU (AH) AFRU+PAL (AH) 118.3	AWIS (AH) 133.5	Bearings are Magnetic Elevations in FEET AMSL
-------------------------	--------------	--------------------	--------------	------------------	------------------------------	------------------------------------------	--------------------	--------------------------------------------------

NOT TO SCALE



**SPEED
MAX IAS 250KT
BELOW 10,000ft**

RNP 1



10 NM MSA 3600

IGIKI TWO ARRIVAL

RWY 01 ALPHA:

- From IGIKI track 160° to AKBUG
Cross AKBUG AT or ABV 10,000ft
- Track 160° to SARGA
Cross SARGA BETWEEN 4000-6000ft
- Turn RIGHT, track 162° to MOSDU
- Turn LEFT, track 144° to KAKRO
- From KAKRO track via RNP Z RWY 01 or ILS RWY 01

**COMMUNICATIONS FAILURE: PROCEDURE IN IMC
IF ABLE CTC TL APP 07-4752-1207**

- Squawk 7600, comply with vertical navigation requirements, but not below MSA.
- Track via the latest STAR clearance to the nominated runway, then fly the most suitable approach in accordance with ERSA EMERG Section 1.5.

Changes: KAKRO REPLACES FREDY, VALIDITY EDITORIAL, Editorial.

BTLSR05-177