

STANDARD INSTRUMENT ARRIVAL (STAR)
POROB TWO PAPA ARRIVAL (RNAV)

TOWNSVILLE/TOWNSVILLE INTL, QLD (YBTL)

21 MAR 2024

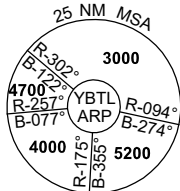
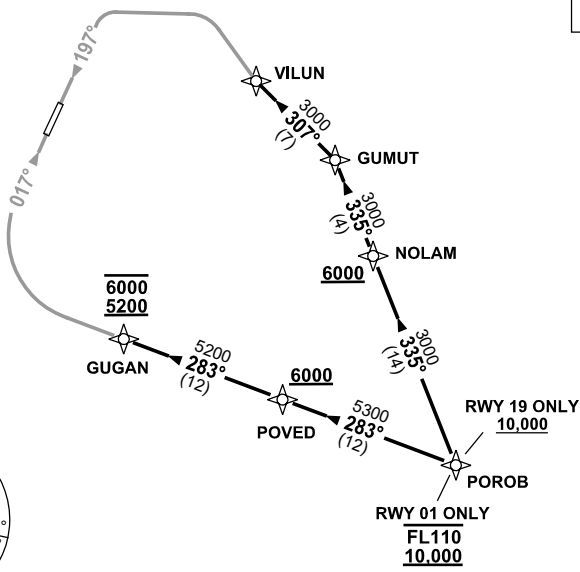
ATIS 114.1 133.5 276	ACD 128.1	SMC 121.8 264.6	TWR 118.3	APP/DEP 126.8	FIA (AH) BN CEN 120.55	CTAF+AFRU (AH) AFRU+PAL (AH) 118.3	AWIS (AH) 133.5	Bearings are Magnetic Elevations in FEET AMSL
-------------------------	--------------	--------------------	--------------	------------------	------------------------------	--	--------------------	--

NOT TO SCALE



**SPEED
MAX IAS 250KT
BELOW 10,000ft**

RNP 1



10 NM MSA 3600

POROB TWO ARRIVAL

RWY 01 PAPA:

- **Cross** POROB BETWEEN 10,000ft-FL110
- From POROB track 283° to POVED
- **Cross** POVED AT or ABV 6000ft
- Track 283° to GUGAN
- **Cross** GUGAN BETWEEN 5200-6000ft
- From GUGAN track via RNP P RWY 01 (AR)

RWY 19 PAPA:

- **Cross** POROB AT or ABV 10,000ft
- From POROB track 335° to NOLAM
- **Cross** NOLAM AT or ABV 6000ft
- Track 335° to GUMUT
- Turn LEFT track 307° to VILUN
- From VILUN track via RNP P RWY 19 (AR)

**COMMUNICATIONS FAILURE: PROCEDURE IN IMC
IF ABLE CTC TL APP 07-4752-1207**

- Squawk 7600, comply with vertical navigation requirements, but not below MSA.
- Track via the latest STAR clearance to the nominated runway, then fly the most suitable approach in accordance with ERSA EMERG Section 1.5.