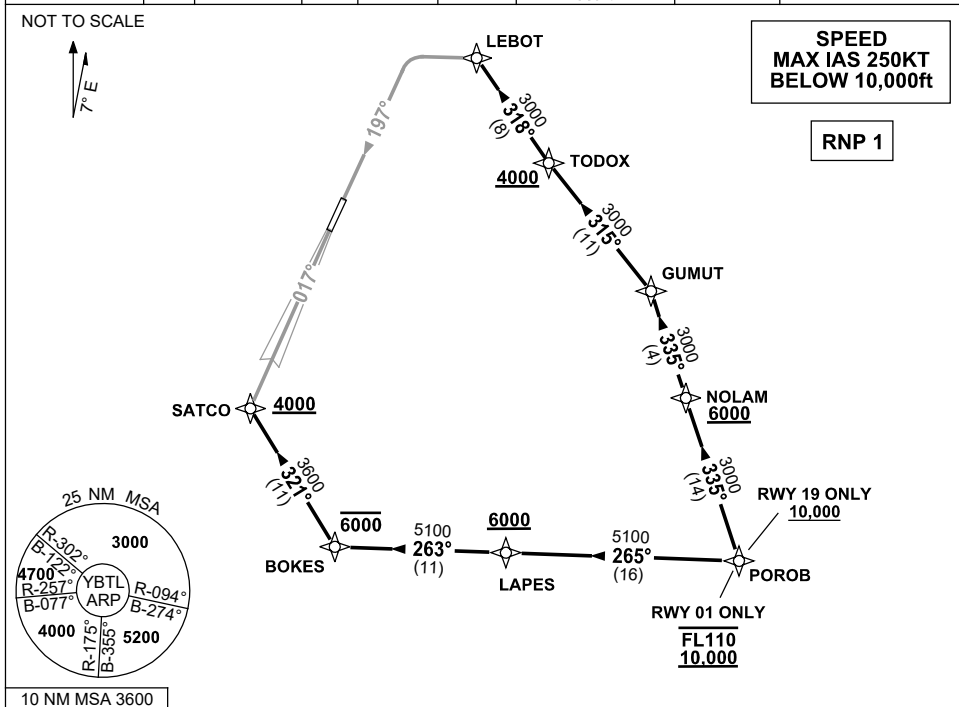


**STANDARD INSTRUMENT ARRIVAL (STAR)
POROB TWO ALPHA, ZULU ARRIVALS (RNAV)
TOWNSVILLE/TOWNSVILLE INTL, QLD (YBTL)**

30 NOV 2023

ATIS 114.1 133.5 276	ACD 128.1	SMC 121.8 264.6	TWR 118.3	APP/DEP 126.8	FIA (AH) BN CEN 120.55	CTAF+AFRU (AH) AFRU+PAL (AH) 118.3	AWIS (AH) 133.5	Bearings are Magnetic Elevations in FEET AMSL
-------------------------	--------------	--------------------	--------------	------------------	------------------------------	--	--------------------	--



POROB TWO ARRIVAL

RWY 01 ALPHA:

- **Cross** POROB BETWEEN 10,000ft-FL110
- From POROB track 265° to LAPES
Cross LAPES AT or ABV 6000ft
- Track 263° to BOKES
Cross BOKES AT or BLW 6000ft
- Turn RIGHT, track 321° to SATCO
Cross SATCO AT or ABV 4000ft
- From SATCO track via RNP Z RWY 01 or ILS RWY 01

RWY 19 ZULU:

- **Cross** POROB AT or ABV 10,000ft
- From POROB track 335° to NOLAM
Cross NOLAM AT or ABV 6000ft
- Track 335° to GUMUT
- Turn LEFT track 315° to TODOX
Cross TODOX AT or ABV 4000ft
- Track 318° to LEBOT
- From LEBOT track via RNP Z RWY 19

**COMMUNICATIONS FAILURE: PROCEDURE IN IMC
IF ABLE CTC TL APP 07-4752-1207**

- Squawk 7600, comply with vertical navigation requirements, but not below MSA.
- Track via the latest STAR clearance to the nominated runway, then fly the most suitable approach in accordance with ERSA EMERG Section 1.5.

Changes: TODOX REPLACES WESTY, VALIDITY NUMBER, Editorial.

BTLSR02-177