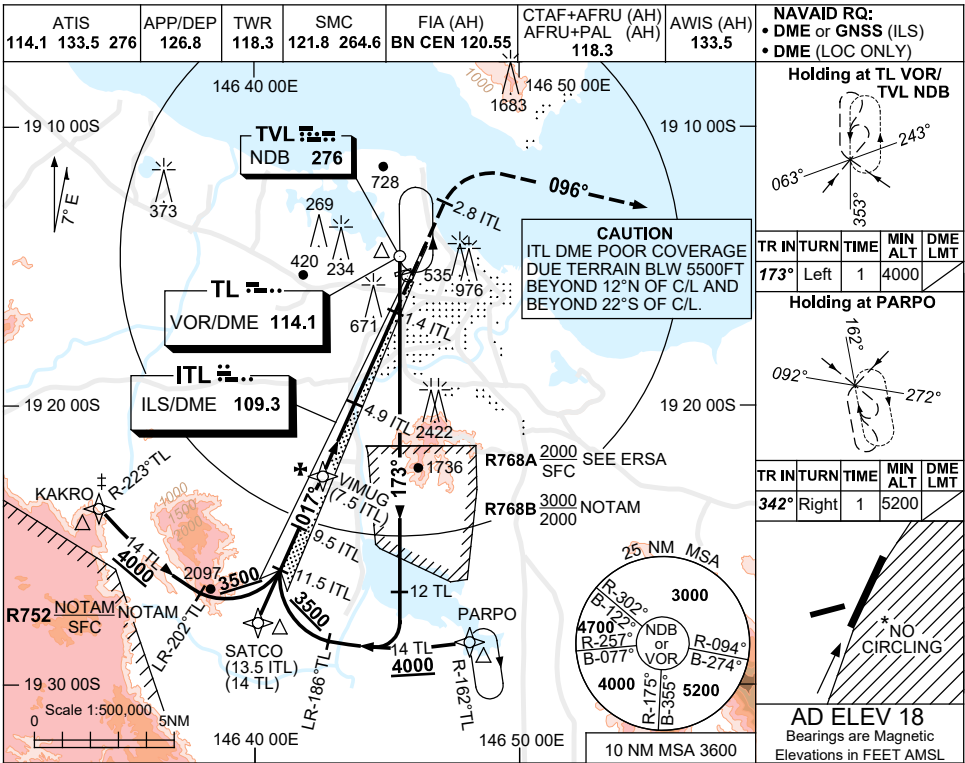


USE QNH

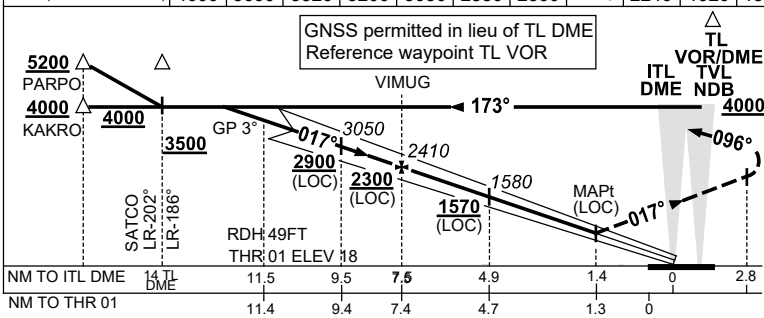
ILS-Z or LOC-Z RWY 01

30 NOV 2023

TOWNSVILLE/TOWNSVILLE INTL, QLD (YBTL)



NM TO ITL DME	12.5	11.5	11	10	9.5	9	8	7.5	7	6	4.9	4	3	2.7
ALT (3° APCH PATH)	4000	3690	3520	3200	3050	2880	2560	2410	2240	1920	1580	1290	970	880



MISSED APPROACH:
 TRACK 017°
 AT 2.8 ITL OUTBOUND
 TURN RIGHT,
 TRACK 096°
 CLIMB TO 3000FT OR
 AS DIRECTED BY ATC.

- NOTES**
- MAX IAS:
MAP TURN: 190KT
UNTIL TRACKING 096°
 - WHEN R752 ACTIVE
ATC RADAR RQ AND
APP VIA KAKRO NOT
AVBL.
 - NO CIRCLING IN
SECTOR EAST OF
RWY 01 & RWY 19.
 - ACFT MAY BE RADAR
VECTORED TO IAF.
 - SPECIAL ALTN MNM
900 /4 SKM. (NOT
(APPLICABLE TO
LOC/DME).
 - COLOUR: SEE
SPEC NOTICES.

CATEGORY	A	B	C	D
S-I ILS		370 (352)	1.6 (VIS 1.2 WITH ACTUAL QNH)	
S-I LOC		880 (862-4.6)		
CIRCLING *	1090 (1072-2.4)		1350 (1332-4.0)	1350 (1332-5.0)
ALTERNATE *	(1572-4.4)		(1832-6.0)	(1832-7.0)

Changes: KAKRO REPLACES FREDY, PARPO REPLACES KIRAN, Editorial.

BT1102-177