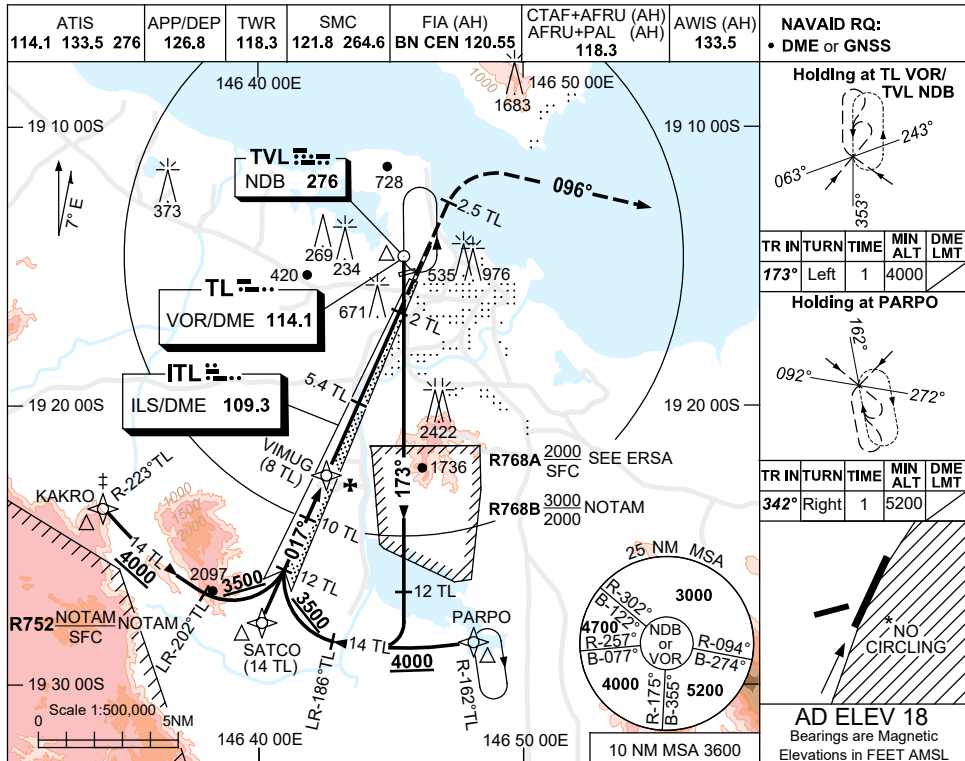


USE QNH

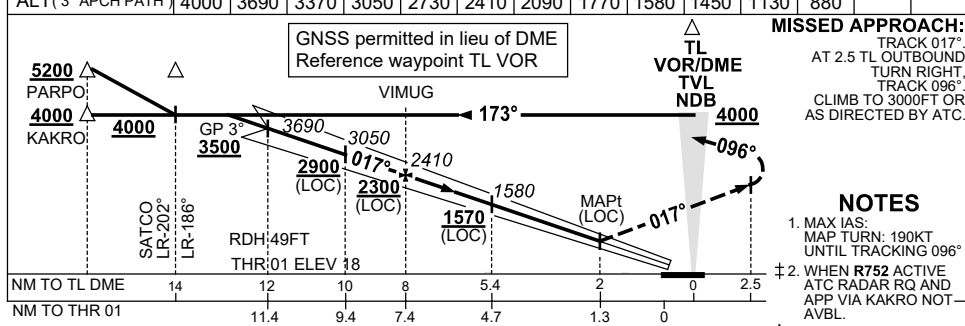
ILS-X or LOC-X RWY 01

30 NOV 2023

TOWNSVILLE/TOWNSVILLE INTL, QLD (YBTL)



NM TO TL DME	13	12	11	10	9	8	7	6	5.4	5	4	3.2		
ALT (3° APCH PATH)	4000	3690	3370	3050	2730	2410	2090	1770	1580	1450	1130	880		



CATEGORY	A	B	C	D
S-I ILS		370 (352)	1.6 (VIS 1.2 WITH ACTUAL QNH)	
S-I LOC		880 (862-4.6)		
CIRCLING *	1090 (1072-2.4)		1350 (1332-4.0)	1350 (1332-5.0)
ALTERNATE *	(1572-4.4)		(1832-6.0)	(1832-7.0)

- NOTES**
- MAX IAS:  
MAP TURN: 190KT  
UNTIL TRACKING 096°
  - WHEN R752 ACTIVE  
ATC RADAR RQ AND  
APP VIA KAKRO NOT  
AVBL.
  - NO CIRCLING IN  
SECTOR EAST OF  
RWY 01 & RWY 19.
  - ACFT MAY BE RADAR  
VECTORED TO IAF.
  - SPECIAL ALTN MNM  
900 /4 SKM. (NOT  
APPLICABLE TO  
LOC/DME).
  - COLOR: SEE  
SPEC NOTICES.

Changes: KAKRO REPLACES FREDY, PARPO REPLACES KIRAN, Editorial.

BTLII01-177