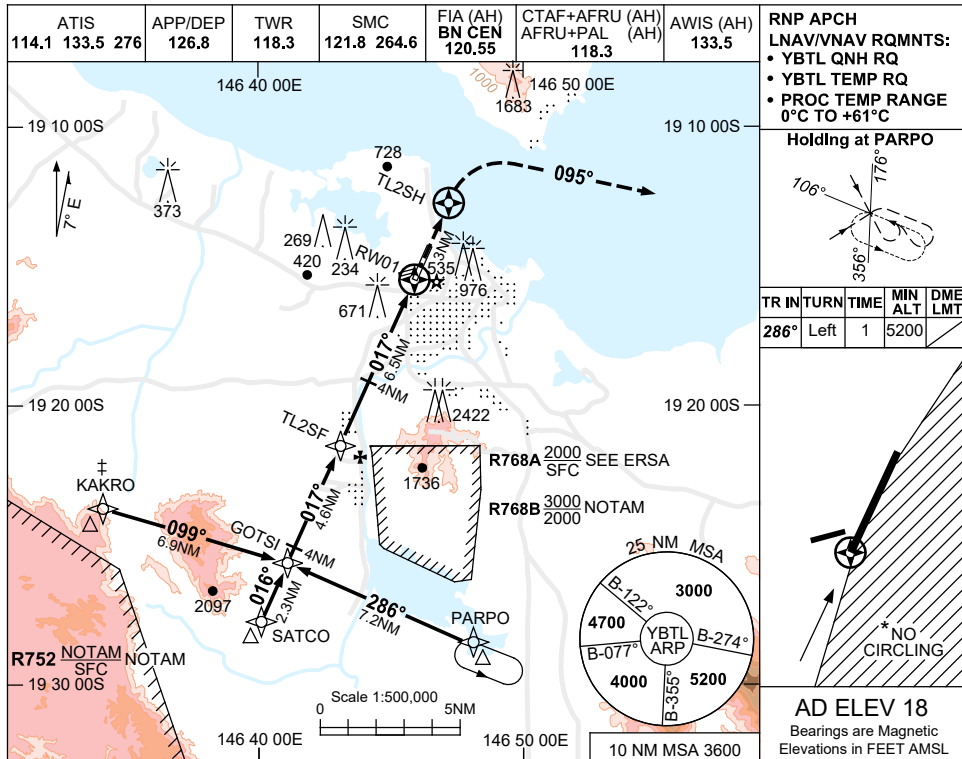


USE QNH

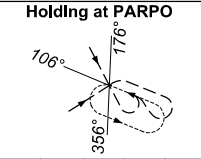
RNP Z RWY 01

30 NOV 2023

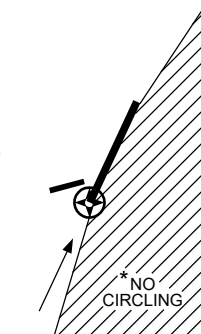
TOWNSVILLE/TOWNSVILLE INTL, QLD (YBTL)



RNP APCH
LNAV/VNAV RQMNTS:
 • YBTL QNH RQ
 • YBTL TEMP RQ
 • PROC TEMP RANGE 0°C TO +61°C

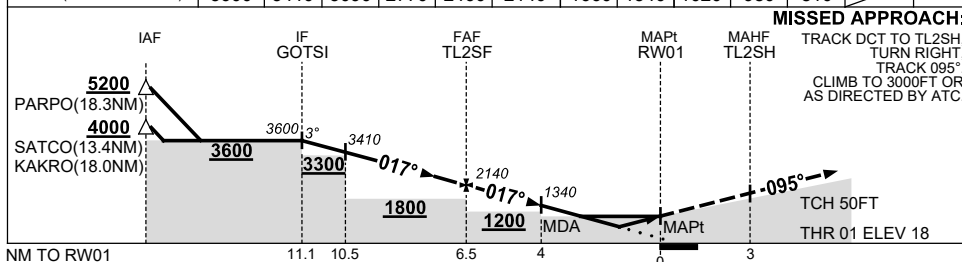


TR IN	TURN	TIME	MIN ALT	DME LMT
286°	Left	1	5200	



AD ELEV 18
 Bearings are Magnetic
 Elevations in FEET AMSL

NM TO NEXT WPT	GOTSI	4	3	2	1	TL2SF	5	4	3	2.9	2.3	RW01
ALT (3° APCH PATH)	3600	3410	3090	2770	2460	2140	1660	1340	1020	980	810	



MISSED APPROACH:
 TRACK DCT TO TL2SH,
 TURN RIGHT,
 TRACK 095°
 CLIMB TO 3000FT OR
 AS DIRECTED BY ATC.

NOTES
 1. MAX IAS:
 INITIAL : 200KT.
 MAP TURN: 190KT.

CATEGORY	A	B	C	D
LNAV/VNAV		810 (792-4.2)		
LNAV		980 (962-5.0)		
CIRCLING *	1090 (1072-2.4)		1350 (1332-4.0)	1350 (1332-5.0)
ALTERNATE	(1572-4.4)		(1832-6.0)	(1832-7.0)

*2. NO CIRCLING IN SECTOR EAST OF RWY 01 & RWY 19.
 †3. WHEN R752 ACT ATC RADAR RQ AND APCH VIA KAKRO NOT AVBL.
 4. COLOUR: SEE SPEC NOTICES.

Changes: WPT NAMING CONVENTION, KAKRO, PARPO, Editorial.

BTLGN05-177