

STANDARD INSTRUMENT DEPARTURES (SID)
RWY 01/19 WALTA TWO (RNAV)
TOWNSVILLE/TOWNSVILLE INTL, QLD (YBTL)

30 NOV 2023

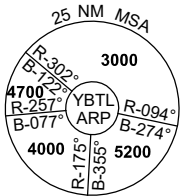
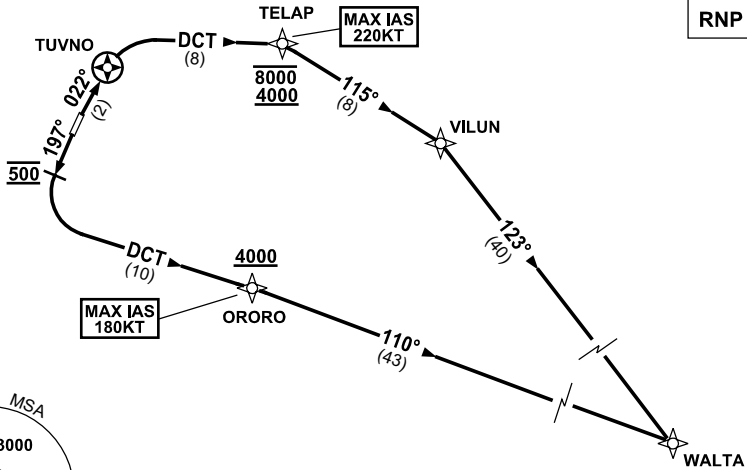
ATIS 114.1 133.5 276	ACD 128.1	SMC 121.8 264.6	TWR 118.3	APP/DEP 126.8	FIA (AH) BN CEN 120.55	CTAF+AFRU (AH) AFRU+PAL (AH) 118.3	AWIS (AH) 133.5	Bearings are Magnetic Elevations in FEET AMSL
-------------------------	--------------	--------------------	--------------	------------------	------------------------------	--	--------------------	--

NOT TO SCALE



**SPEED
MAX IAS 250KT
BELOW 10,000ft**

RNP 1



10 NM MSA 3600

WALTA TWO DEPARTURE

RWY 01

- GRAD 4.9% to 1700ft then 3.3%
- MAX IAS 220KT UNTIL PASSING TELAP**
- Track 022° to TUVNO
- Turn RIGHT, track DCT to TELAP
- Cross** TELAP BETWEEN 4000-8000ft (RQ GRAD to TELAP: 6.7%)
- Turn RIGHT, track 115° to VILUN
- Turn RIGHT, track 123° to WALTA

RWY 19

- GRAD 8% to 1500ft then 3.3%
- MAX IAS 180KT UNTIL PASSING ORORO**
- Track 197°
- At 500ft turn LEFT, track DCT to ORORO
- Cross** ORORO AT or ABV 4000ft (RQ GRAD to ORORO: 5.4% FM 1500ft)
- Track 110° to WALTA

Changes: TELAP REPLACES MAGGY, VALIDITY NUMBER, Editorial.

BTLDP12-177