

STANDARD INSTRUMENT DEPARTURES (SID)
RWY 01/19 AKROM ONE (RNAV)
TOWNSVILLE/TOWNSVILLE INTL, QLD (YBTL)

30 NOV 2023

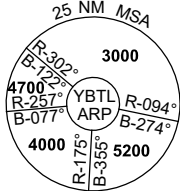
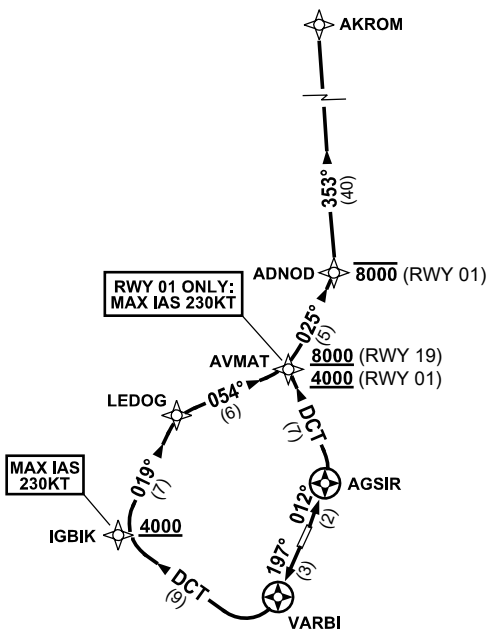
ATIS 114.1 133.5 276	ACD 128.1	SMC 121.8 264.6	TWR 118.3	APP/DEP 126.8	FIA (AH) BN CEN 120.55	CTAF+AFRU (AH) AFRU+PAL (AH) 118.3	AWIS (AH) 133.5	Bearings are Magnetic Elevations in FEET AMSL
-------------------------	--------------	--------------------	--------------	------------------	------------------------------	--	--------------------	--

NOT TO SCALE



**SPEED
MAX IAS 250KT
BELOW 10,000ft**

RNP 1



10 NM MSA 3600

AKROM ONE DEPARTURE

RWY 01

- GRAD 5.4% to 1000ft then 3.3%
- MAX IAS 230KT UNTIL PASSING AVMAT**
- Track 012° to AGSIR
- Turn LEFT, track DCT to AVMAT
- Cross AVMAT AT or ABV 4000ft**
(RQ GRAD to AVMAT: 7.0%)
- Turn RIGHT, track 025° to ADNOD
- Cross ADNOD AT or BLW 8000ft**
- Turn LEFT, track 353° to AKROM

RWY 19

- GRAD 5.5% to 1300ft then 3.3%
- MAX IAS 230KT UNTIL PASSING IGBIK**
- Track 197° to VARBI
- Turn RIGHT, track DCT to IGBIK
- Cross IGBIK AT or ABV 4000ft**
- Turn RIGHT, track 019° to LEDOG
- Turn RIGHT, track 054° to AVMAT
- Cross AVMAT AT or ABV 8000ft**
(RQ GRAD to AVMAT: 5.6%)
- Turn LEFT, track 025° to ADNOD
- Turn LEFT, track 353° to AKROM

Changes: AKROM REPLACES SWIFT, CHART TITLE, Editorial.

BTLDP11-177