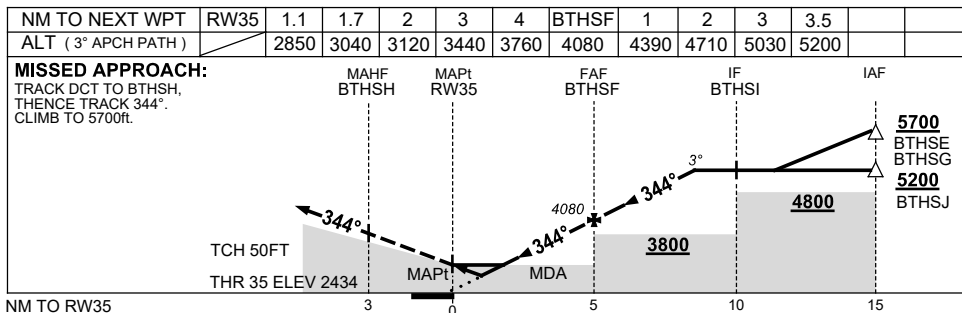
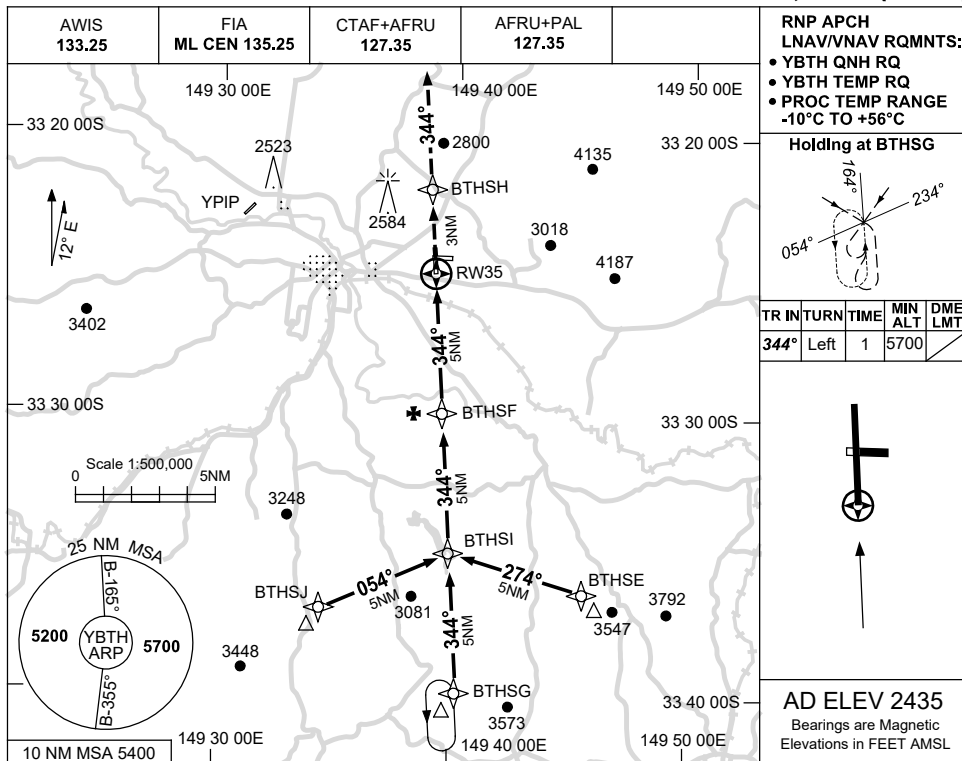


USE QNH

RNP RWY 35

21 MAR 2024

BATHURST, NSW (YBTH)



**NOTES**

CATEGORY	A	B	C	D
LNAV/VNAV	2850 (416-2.3)			NOT APPLICABLE
LNAV	3040 (605-3.4)			
CIRCLING	3810 (1375-2.4)		3810 (1375-4.0)	
ALTERNATE	(1875-4.4)		(1875-6.0)	

1. MAX IAS: INITIAL : 210KT.

Changes: GLIDING SYMBOL REMOVED, Editorial.

BTHGN02-178