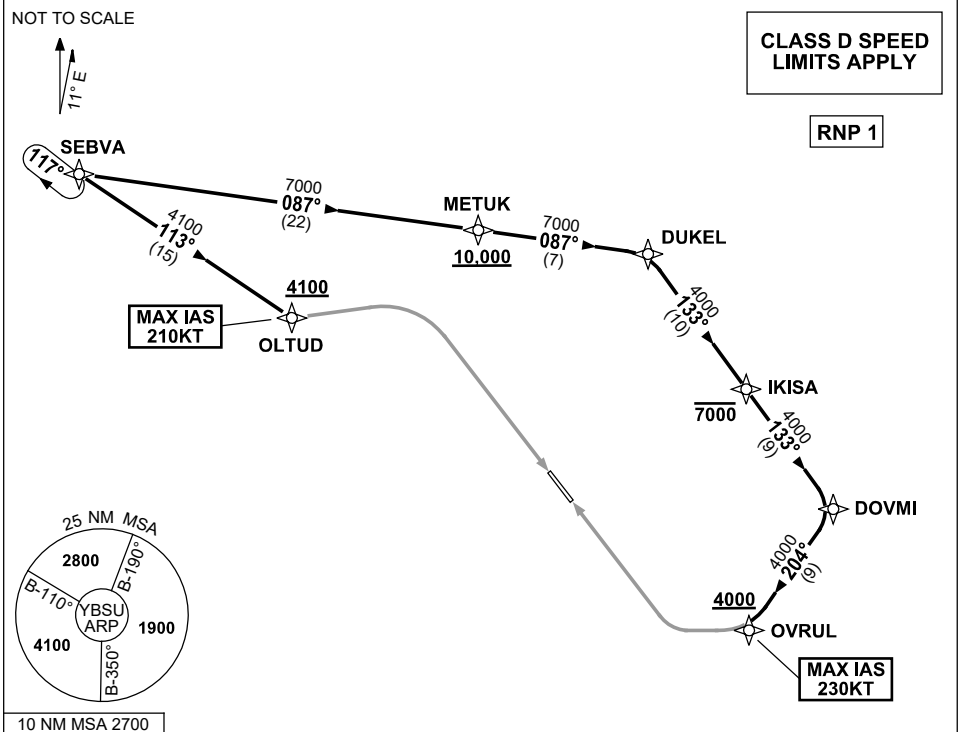


**STANDARD INSTRUMENT ARRIVAL (STAR)
SEBVA ONE ZULU ARRIVAL (RNAV)
SUNSHINE COAST, QLD (YBSU)**

8 SEP 2022

| | | | | | | |
|-------------------------------|--------------|--------------|---|-------------------------|-------------------|--|
| ATIS/AWIS (AH) 114.2/119.8 | SMC 121.1 | TWR 124.4 | FIA BN CEN 129.0 (CCT AREA) BN CEN 135.2 (ON GROUND AH) | CTAF+AFRU (AH) 124.4 | AFRU+PAL 124.4 | Bearings are Magnetic Elevations in FEET AMSL |
|-------------------------------|--------------|--------------|---|-------------------------|-------------------|--|



ARRIVAL: SEBVA ONE ZULU

RWY 13:

- From SEBVA track 113° to OLTUD
Cross OLTUD AT or ABV 4100ft
MAX IAS 210KT AT OLTUD
- Track via RNP Z RWY 13

RWY 31:

- From SEBVA, track 087° to METUK
Cross METUK AT or ABV 10,000ft
- Track 087° to DUKEL
- Turn RIGHT, track 133° to IKISA
Cross IKISA AT or BLW 7000ft
- Track 133° to DOVMI
- Turn RIGHT, track 204° to OVRUL
Cross OVRUL AT or ABV 4000ft
MAX IAS 230KT AT OVRUL
- Track via RNP Z RWY 31 or RNP Y RWY 31

COMMUNICATIONS FAILURE: PROCEDURE IN IMC

- Squawk 7600, comply with vertical navigation requirements, but not below MSA.
- Track via the latest STAR clearance to the nominated runway, then fly the most suitable approach in accordance with ERSAs EMERG Section 1.5.

Changes: HOLDING.

BSUSR05-172