

**STANDARD INSTRUMENT ARRIVAL (STAR)
ITIDE TWO WHISKEY ARRIVAL (RNAV)
SUNSHINE COAST, QLD (YBSU)**

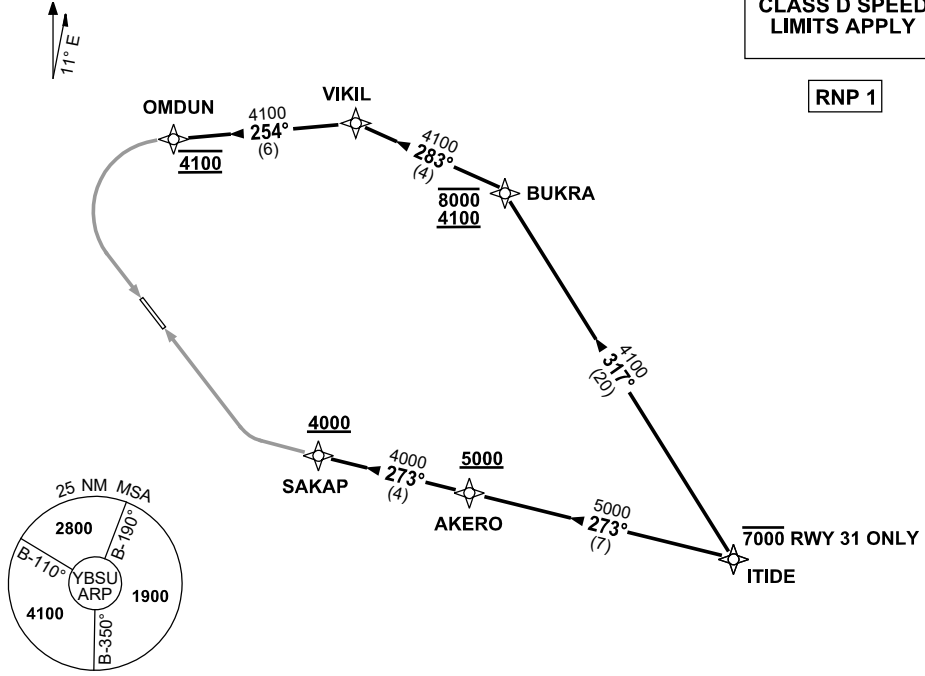
8 SEP 2022

ATIS/AWIS (AH) 114.2/119.8	SMC 121.1	TWR 124.4	FIA BN CEN 129.0 (CCT AREA) BN CEN 135.2 (ON GROUND AH)	CTAF+AFRU (AH) 124.4	AFRU+PAL 124.4	Bearings are Magnetic Elevations in FEET AMSL
-------------------------------	--------------	--------------	---------------------------------------------------------------	-------------------------	-------------------	--------------------------------------------------

NOT TO SCALE

**CLASS D SPEED
LIMITS APPLY**

RNP 1



10 NM MSA 2700

ARRIVAL: ITIDE TWO WHISKEY

RWY 13:

- From ITIDE, track 317° to BUKRA
Cross BUKRA BTN 4100ft and 8000ft
- Turn LEFT, track 283° to VIKIL
- Turn LEFT, track 254° to OMDUN
- Track via RNP W RWY 13 (AR)

RWY 31:

- From ITIDE AT or BLW 7000FT
- Track 273° to AKERO
Cross AKERO AT or ABV 5000ft
- Track 273° to SAKAP
Cross SAKAP AT or ABV 4000ft
- Track via RNP W RWY 31 (AR)

COMMUNICATIONS FAILURE: PROCEDURE IN IMC

- Squawk 7600, comply with vertical navigation requirements, but not below MSA.
- Track via the latest STAR clearance to the nominated runway, then fly the most suitable approach in accordance with ERSA EMERG Section 1.5.

Changes: REVISED PROC.

BSUSR04-172