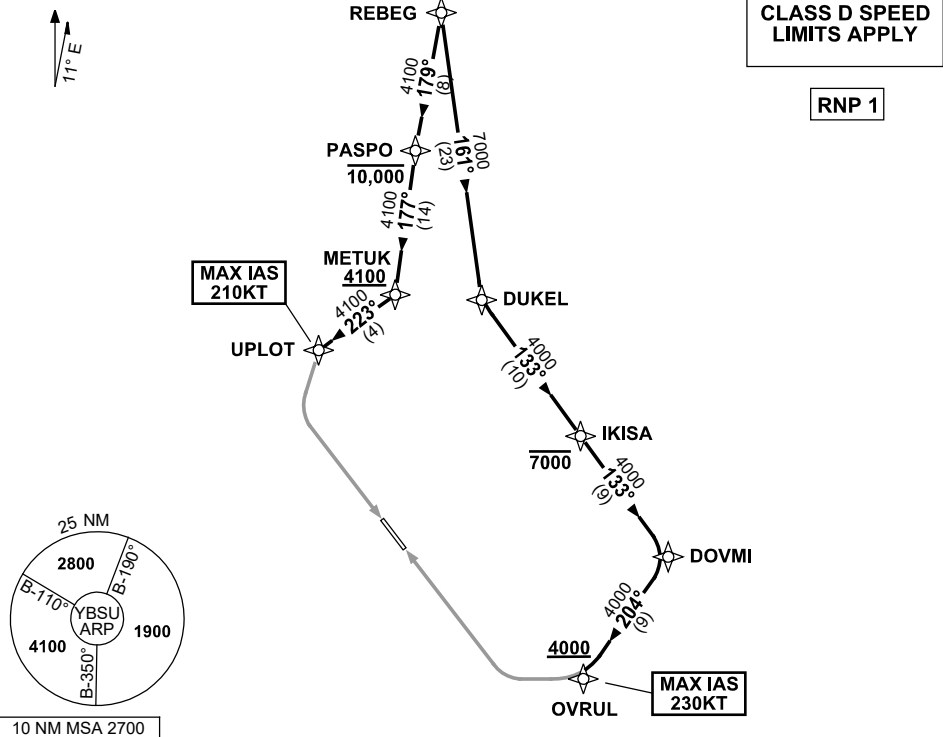


**STANDARD INSTRUMENT ARRIVAL (STAR)
REBEG TWO ZULU ARRIVAL (RNAV)
SUNSHINE COAST, QLD (YBSU)**

16 JUN 2022

ATIS/AWIS (AH) 114.2/119.8	SMC 121.1	TWR 124.4	FIA BN CEN 129.0 (CCT AREA) BN CEN 135.2 (ON GROUND AH)	CTAF+AFRU (AH) 124.4	AFRU+PAL 124.4	Bearings are Magnetic Elevations in FEET AMSL
-------------------------------	--------------	--------------	---	-------------------------	-------------------	--

NOT TO SCALE



10 NM MSA 2700

ARRIVAL: REBEG TWO ZULU

RWY 13:

- From REBEG track 179° to PASPO
Cross PASPO AT or BLW 10,000ft
- Turn LEFT, track 177° to METUK
Cross METUK AT or ABV 4100ft
- Turn RIGHT, track 223° to UPLOTT
MAX IAS 210KT AT UPLOTT
- Track via RNP Z RWY 13

RWY 31:

- From REBEG track 161° to DUKEL
- Turn LEFT, track 133° to IKISA
Cross IKISA AT or BLW 7000ft
- Track 133° to DOVMI
- Turn RIGHT, track 204° to OVRUL
Cross OVRUL AT or ABV 4000ft
MAX IAS 230KT AT OVRUL
- Track via RNP Z RWY 31 or RNP Y RWY 31

COMMUNICATIONS FAILURE: PROCEDURE IN IMC

- Squawk 7600, comply with vertical navigation requirements, but not below MSA.
- Track via the latest STAR clearance to the nominated runway, then fly the most suitable approach in accordance with ERSA EMERG Section 1.5.

Changes: CHART TITLE, PASPO ALT REQUIREMENT.

BSUSR01-171