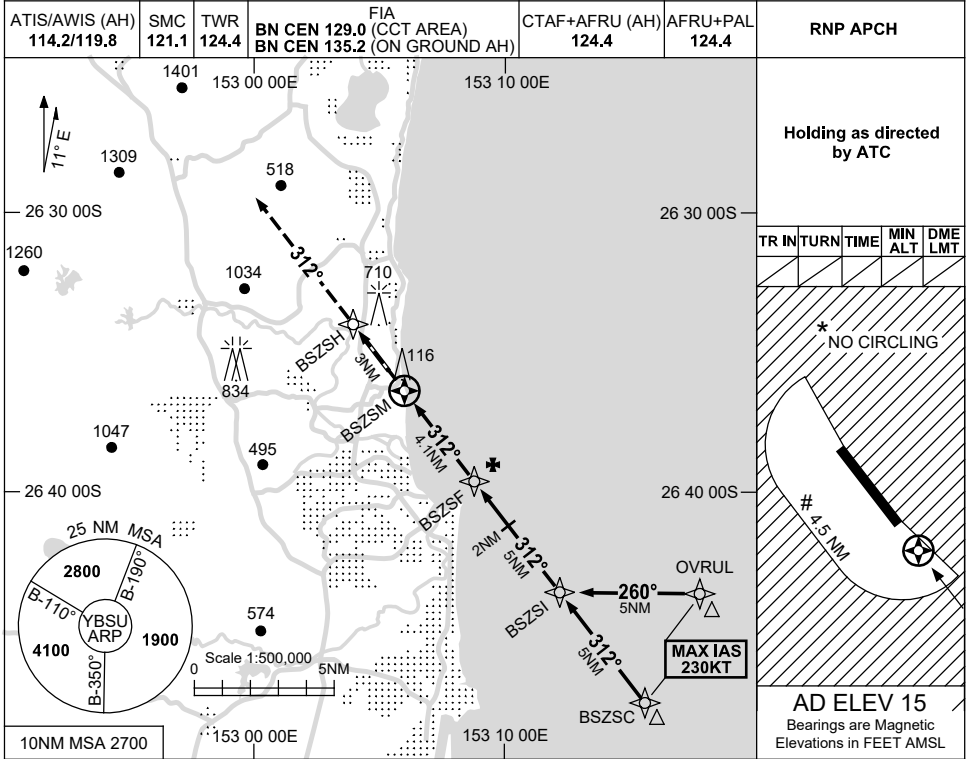


USE QNH

RNP Z RWY 31

SUNSHINE COAST, QLD (YBSU)

21 MAR 2024

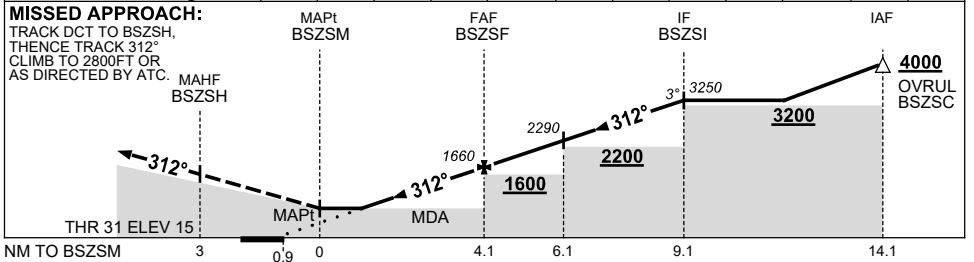


Holding as directed by ATC

TR IN	TURN	TIME	MIN ALT	DME LMT
* NO CIRCLING				
# 4.5 NM				

AD ELEV 15
Bearings are Magnetic
Elevations in FEET AMSL

NM TO NEXT WPT	BSZSM	0.6	0.9	2	3	BSZSF	1	2	3	4	BSZSI		
ALT (3° APCH PATH)		550	640	990	1310	1660	1980	2290	2610	2930	3250		



NOTES

CATEGORY	A	B	C	D
LNAV (3.5% MAP)	550 (535-3.0)			
LNAV (2.5% MAP)	640 (625-3.6)			
CIRCLING *	680 (665-2.4)	1160 (1145-4.0)	1260 (1245-5.0)	
ALTERNATE	(1165-4.4)		(1745-7.0)	

- MAX IAS: INITIAL : 230KT. # CIRCLING: 190KT.
- * NO CIRCLING E OF RWY 13/31 AND W BEYOND 4.5NM.

Changes: PJE SYMBOLS REMOVED, Editorial.

BSUGN09-178

