

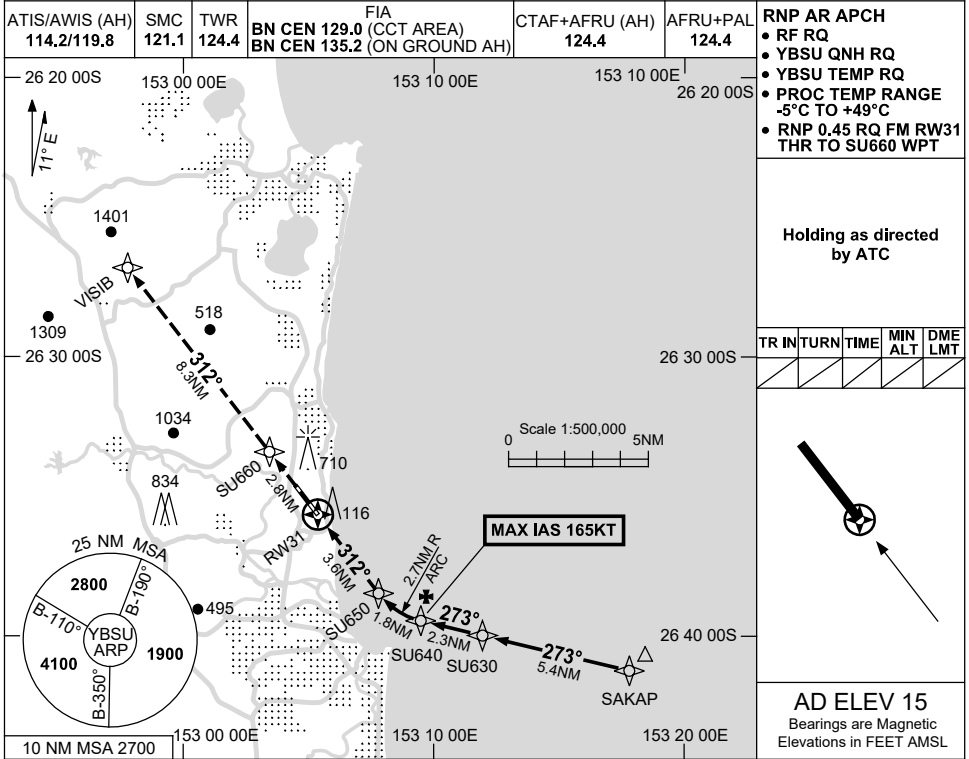
FOR CASA APPROVED OPERATORS ONLY

USE QNH

RNP W RWY 31 (AR)

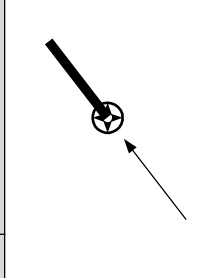
SUNSHINE COAST, QLD (YBSU)

21 MAR 2024



Holding as directed by ATC

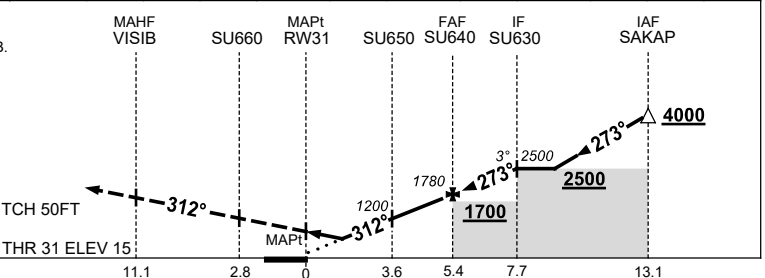
TR	IN	TURN	TIME	MIN ALT	DME LMT



AD ELEV 15
Bearings are Magnetic
Elevations in FEET AMSL

NM TO NEXT WPT	RW31	1	2	3	SU650	1	SU640	1	SU630			
ALT (3° APCH PATH)	370	700	1020	1200	1510	1780	2100	2500				

MISSED APPROACH:
TRACK 312° TO SU660.
THEN TRACK 312° TO VISIB.
CLIMB TO 2800ft OR
AS DIRECTED BY ATC.



NOTES

- MAX IAS:
SU640 : 165KT.

CATEGORY	A	B	C	D
RNP (0.3)	370 (355-2.0)			
CIRCLING	NOT AUTHORISED			
ALTERNATE	(1065-4.4)	(1545-6.0)	(1645-7.0)	

Changes: PJE SYMBOLS REMOVED, Editorial.

BSUGN08-178