

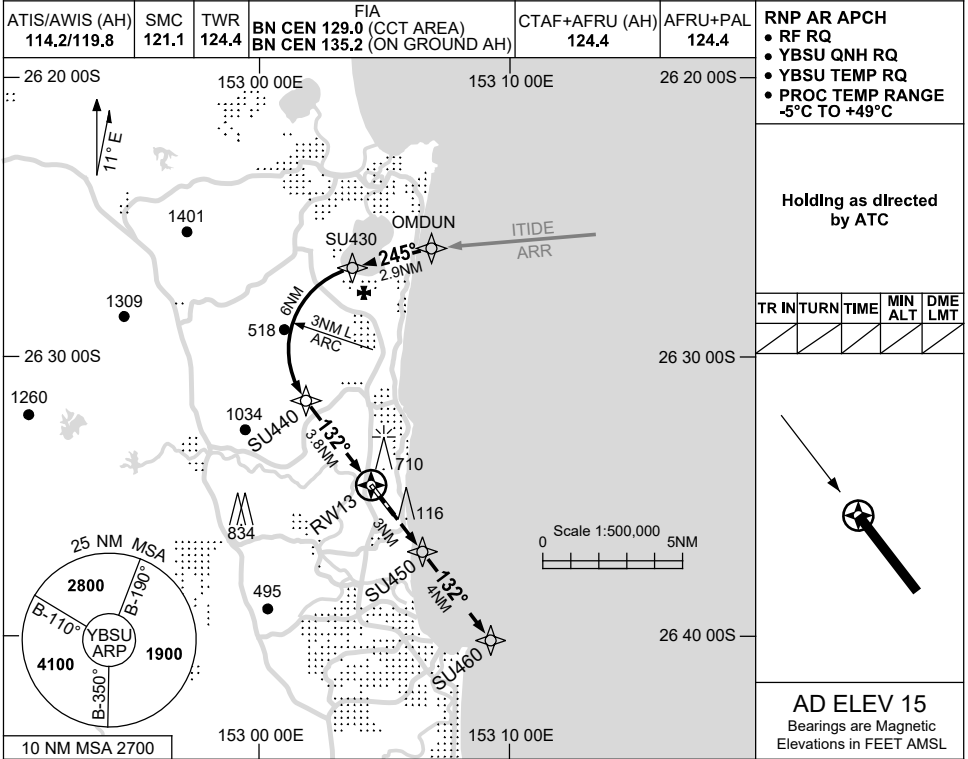
FOR CASA APPROVED OPERATORS ONLY

USE QNH

RNP W RWY 13 (AR)

SUNSHINE COAST, QLD (YBSU)

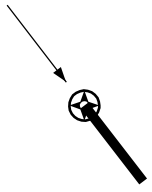
21 MAR 2024



- RNP AR APCH
- RF RQ
- YBSU QNH RQ
- YBSU TEMP RQ
- PROC TEMP RANGE -5°C TO +49°C

Holding as directed by ATC

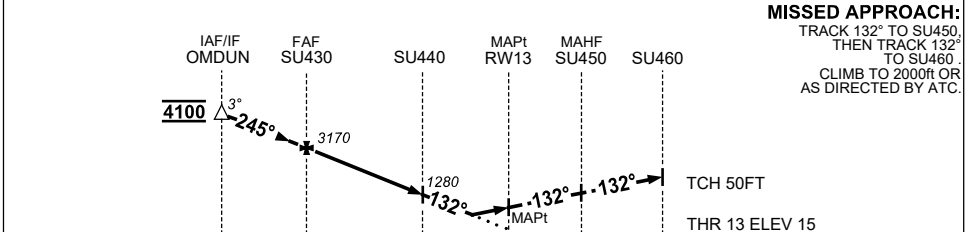
TR	IN	TURN	TIME	MIN ALT	DME LMT



AD ELEV 15

Bearings are Magnetic
Elevations in FEET AMSL

NM TO NEXT WPT	OMDUN	2	1	SU430	5	4	3	2	1	SU440	3	2	1.1	RW13
ALT (3° APCH PATH)	4100	3810	3490	3170	2870	2550	2230	1910	1600	1280	1020	700	420	



MISSED APPROACH:
TRACK 132° TO SU450,
THEN TRACK 132°
TO SU460.
CLIMB TO 2000R OR
AS DIRECTED BY ATC.

NM TO RW13	12.7	9.8	3.8	0	3	7

NOTES

CATEGORY	A	B	C	D
RNP (0.3)	420 (405-2.3)			
CIRCLING	NOT AUTHORISED			
ALTERNATE	(1065-4.4)	(1545-6.0)	(1645-7.0)	

Changes: PJE SYMBOLS REMOVED, Editorial.

BSUGN07-178