

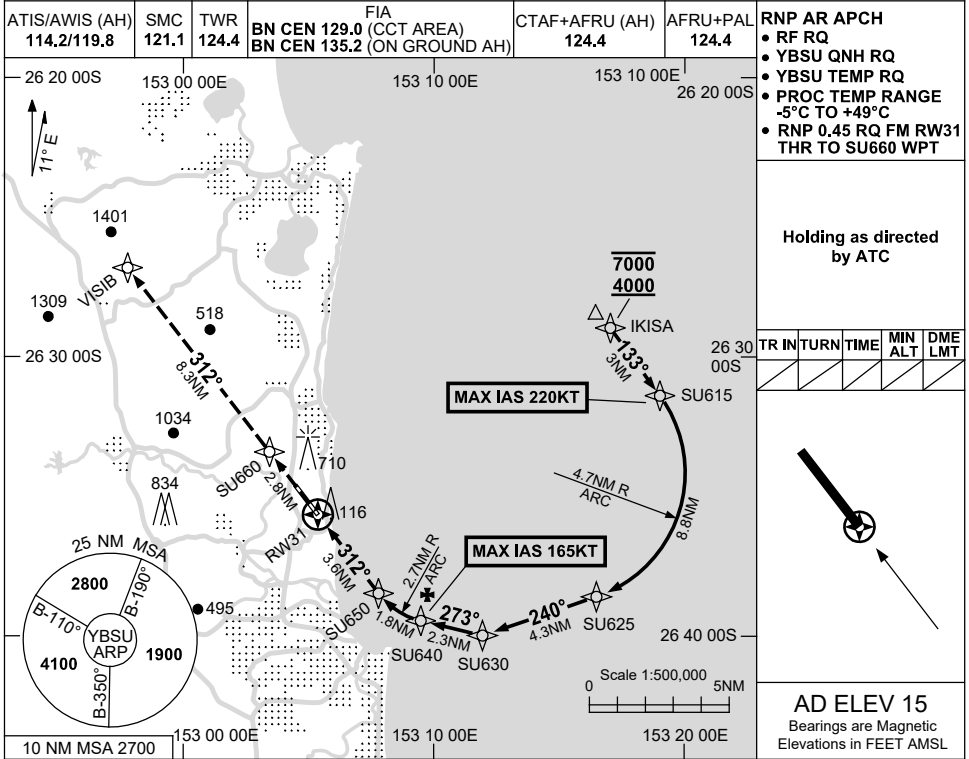
FOR CASA APPROVED OPERATORS ONLY

USE QNH

RNP X RWY 31 (AR)

SUNSHINE COAST, QLD (YBSU)

21 MAR 2024



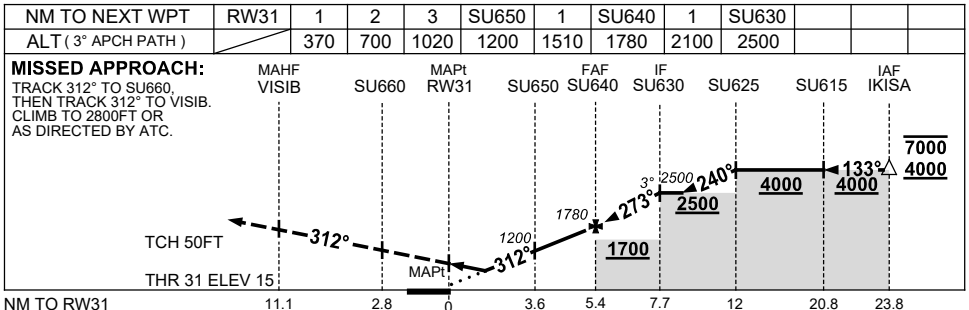
- RNP AR APCH**
- RF RQ
  - YBSU QNH RQ
  - YBSU TEMP RQ
  - PROC TEMP RANGE -5°C TO +49°C
  - RNP 0.45 RQ FM RWY31 THR TO SU660 WPT

Holding as directed by ATC

TR	IN	TURN	TIME	MIN ALT	DME LMT



AD ELEV 15  
Bearings are Magnetic  
Elevations in FEET AMSL



NOTES

- MAX IAS:  
SU615 : 220KT.  
SU640 : 165KT.

CATEGORY	A	B	C	D
RNP (0.3)	370 (355-2.0)			
CIRCLING	NOT AUTHORISED			
ALTERNATE	(1065-4.4)		(1545-6.0)	(1645-7.0)

Changes: PJE SYMBOLS REMOVED, Editorial.

BSUGN06-178

