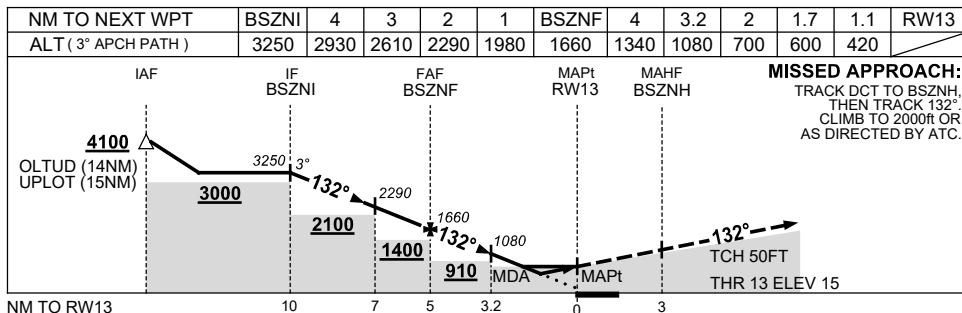
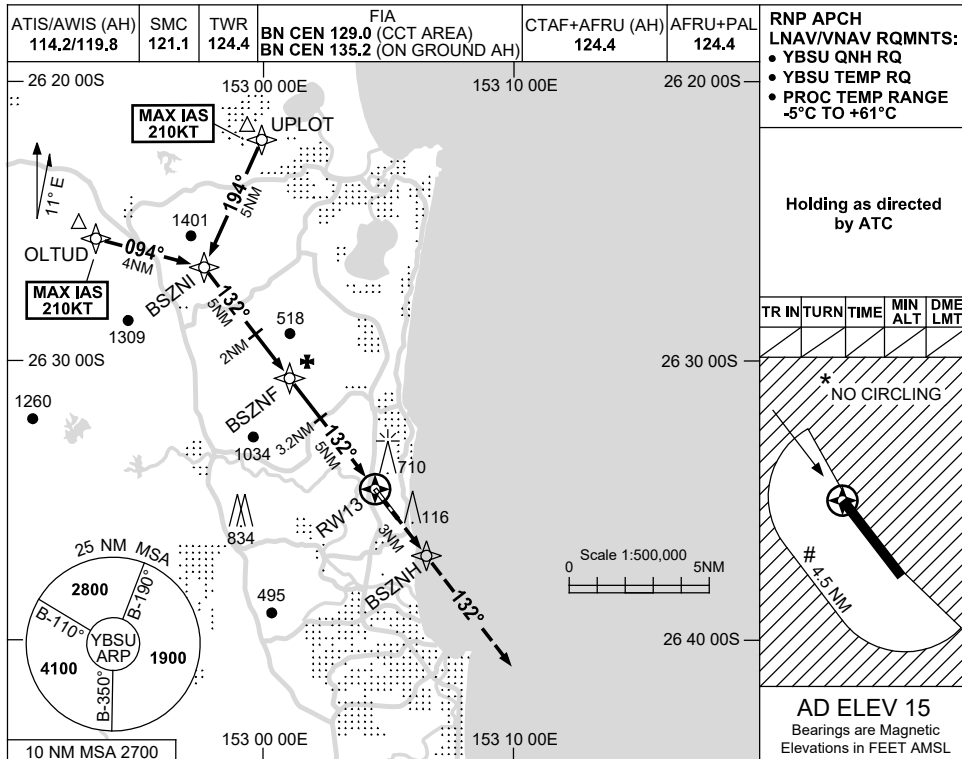


USE QNH

RNP Z RWY 13

21 MAR 2024

**SUNSHINE COAST, QLD (YBSU)**



CATEGORY	A	B	C	D
LNAV/VNAV		<b>420</b> (405-2.3)		
LNAV		<b>600</b> (585-3.3)		
CIRCLING*	<b>680</b> (665-2.4)		<b>1160</b> (1145-4.0)	<b>1260</b> (1245-5.0)
ALTERNATE	(1165-4.4)		(1645-6.0)	(1745-7.0)

- NOTES**
- MAX IAS: INITIAL : 210KT, # CIRCLING: 190KT.
  - \* NO CIRCLING E OF RWY 13/31 AND W BEYOND 4.5NM.

Changes: PJE SYMBOLS REMOVED, Editorial.

BSUGN05-178