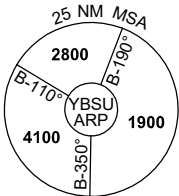
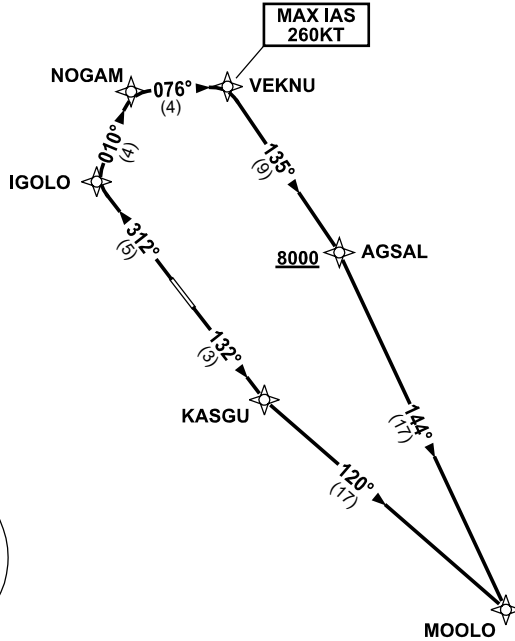


STANDARD INSTRUMENT DEPARTURES (SID)
MOOLO ONE DEPARTURE (RNAV)
SUNSHINE COAST, QLD (YBSU)

24 MAR 2022

ATIS/AWIS (AH) 114.2/119.8	SMC 121.1	TWR 124.4	FIA BN CEN 129.0 (CCT AREA) BN CEN 135.2 (ON GROUND AH)	CTAF+AFRU (AH) 124.4	AFRU+PAL 124.4	Bearings are Magnetic Elevations in FEET AMSL
-------------------------------	--------------	--------------	---	-------------------------	-------------------	--

NOT TO SCALE



10 NM MSA 2700

MOOLO ONE DEPARTURE

RWY 13

- GRAD 3.3% (4.7% TO 2500ft)
- Track 132° to KASGU
- Turn LEFT, track 120° to MOOLO

RWY 31

- GRAD 5% to 300ft, then 3.3%
- Track 132° to IGOLO
- Turn RIGHT, track 010° to NOGAM
- Turn RIGHT, track 076° to VEKNU
- MAX IAS 260KT** to VEKNU
- Turn RIGHT, track 135° to AGSAL
- Cross AGSAL AT or ABV 8000ft**
(RQ GRAD TO AGSAL: 6%)
- Turn RIGHT, track 144° to MOOLO