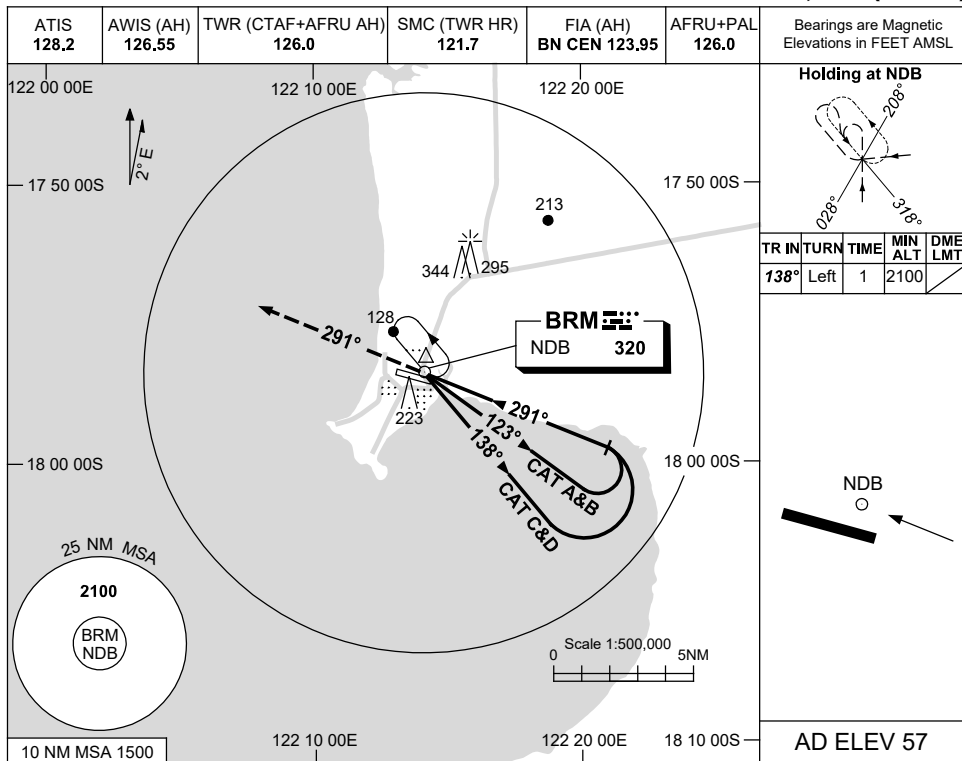


USE QNH

NDB-Y RWY 28

BROOME/INTL, WA (YBRM)

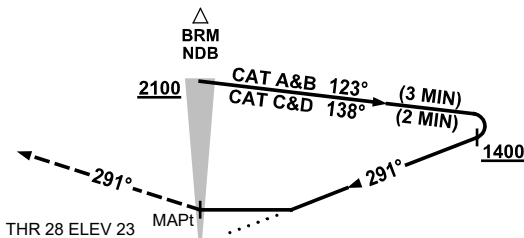
16 JUN 2022



DIST TO BRM DME	NOT APPLICABLE						
ALT							

MISSED APPROACH:

TRACK 291°
CLIMB TO 2100FT.



NOTES

1. PROC NOT AVBL DRG TWR HRS.

CATEGORY	A	B	C	D
S-I NDB	650 (627-3.6)			
CIRCLING	650 (593-2.4)	840 (783-4.0)	850 (793-5.0)	
ALTERNATE	(1093-4.4)	(1283-6.0)	(1293-7.0)	

Changes: MAGNETIC TRACKS.

BRMNB04-171