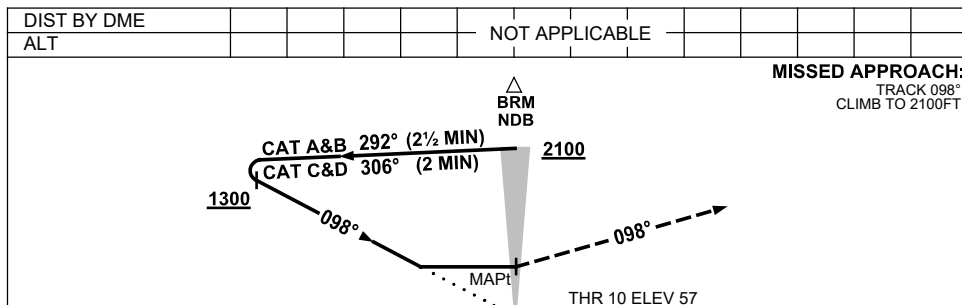
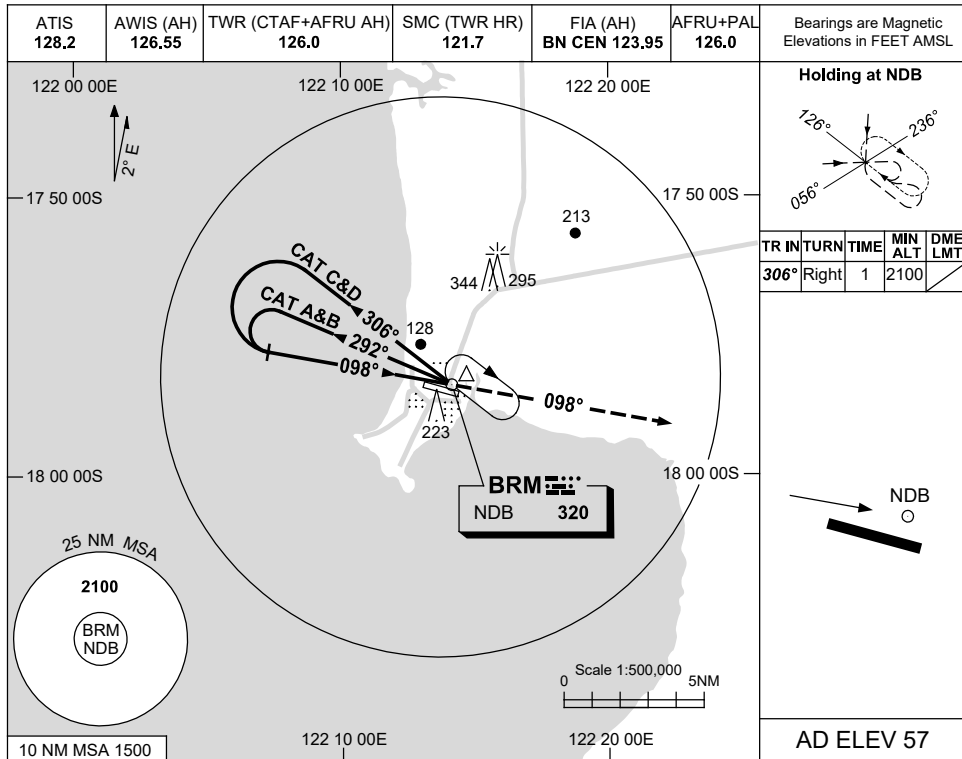


USE QNH

NDB-Y RWY 10

**BROOME/INTL, WA (YBRM)**

16 JUN 2022



**NOTES**

- PROC NOT AVBL DRG TWR HRS.

CATEGORY	A	B	C	D
S-I NDB	<b>650 (593-3.4)</b>			
CIRCLING	<b>650 (593-2.4)</b>	<b>840 (783-4.0)</b>	<b>850 (793-5.0)</b>	
ALTERNATE	(1093-4.4)	(1283-6.0)	(1293-7.0)	

Changes: MAGNETIC TRACKS.

BRMNB03-171