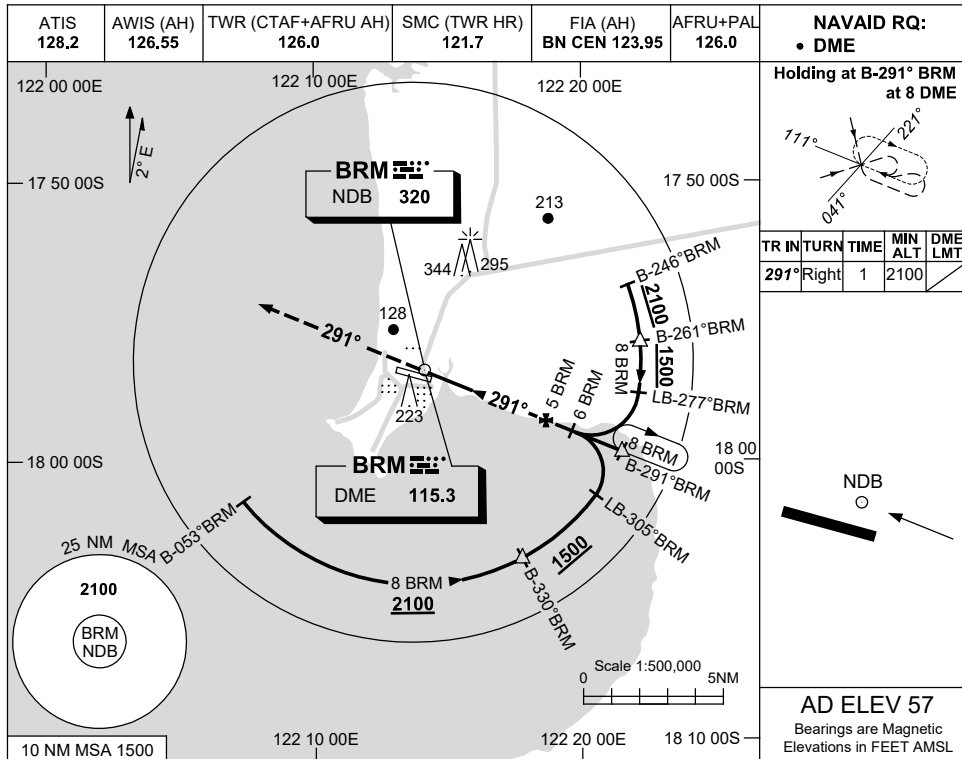


USE QNH

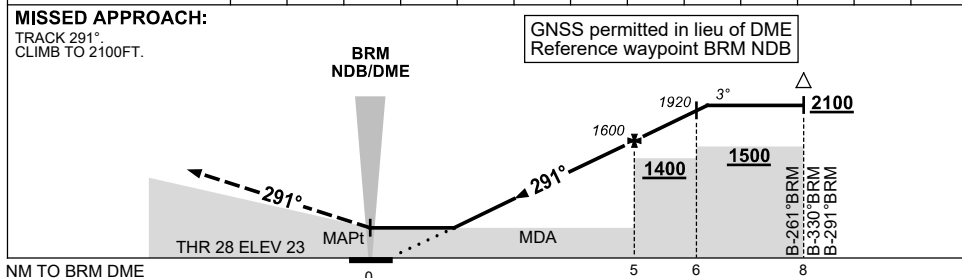
NDB-Z RWY 28

**BROOME/INTL, WA (YBRM)**

16 JUN 2022



DIST TO BRM DME	1.9	2	3	4	5	6	6.2						
ALT (3° APCH PATH)	600	650	970	1290	1600	1920	2000						



**NOTES**

CATEGORY	A	B	C	D
S-I NDB/DME	<b>600 (577-3.3)</b>			
CIRCLING	<b>650 (593-2.4)</b>	<b>840 (783-4.0)</b>	<b>850 (793-5.0)</b>	
ALTERNATE	(1093-4.4)	(1283-6.0)	(1293-7.0)	

1. HOLDING NOT CONTAINED IN CTA.

Changes: MAGNETIC TRACKS.

BRMNB02-171