

**FOR CASA APPROVED
OPERATORS ONLY
USE QNH**

8 SEP 2022

GE PROPRIETARY INFORMATION

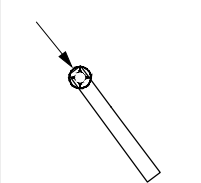
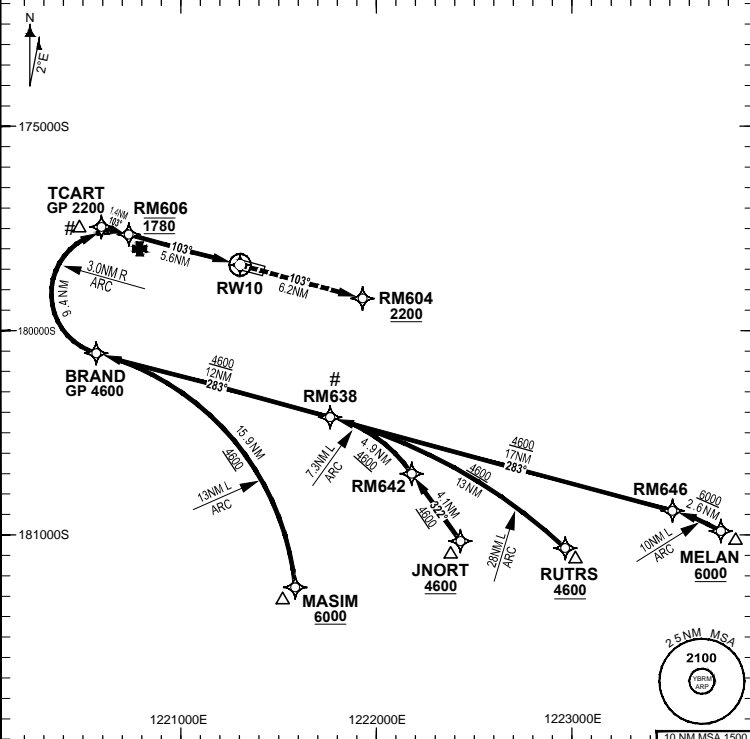
ATIS	AWIS (AH)	TWR (CTAF+AFRU AH)	SMC (TWR HR)	FIA (AH)	AFRU + PAL	RNV U 10 THR ELEV 57
128.2	126.55	126.0	121.7	BN CEN 123.95	126.0	

RNP AR APCH
 - RF RQ
 - YBRM ACT QNH RQ
 - YBRM ACT TEMP RQ
 - PROC TEMP RANGE +8°C TO +42°C

Holding as directed by ATC

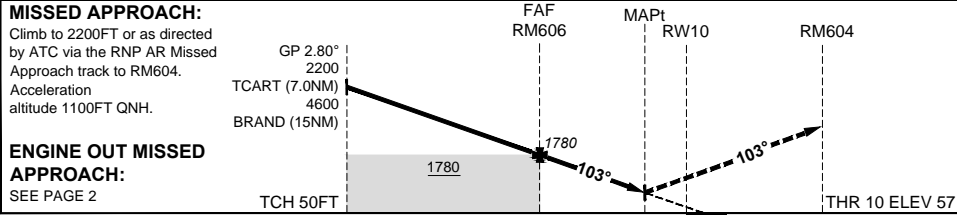
TR	INTURN	TIME	MIN ALT	DME LMT

COPYRIGHT © NAVERUS, INC., 2022. ALL RIGHTS RESERVED.



AD ELEV 57
 Bearings are Magnetic
 Elevations in FEET AMSL

DISTANCE FM THR	BRAND	TCART	RM606					
ALT (2.80° APCH PATH)	4600	2200	1780					



NM FM THR 5.6 0 6.2

CATEGORY	A	B	C
RNP (0.3)			DA(H) 346 (289-1.5)
		N/A	
CIRCLING			NOT AUTHORISED
ALTERNATE			

- NOTES**
- Lateral transition to Missed Approach must not be initiated prior to DA/H PSN.
 - APCH Path does not coincide with VGSI on glide slope indication.
 - Latest point where the ACFT can join the PROC.
 - Minimum MAP gradient (All Engines) 4.8% to 2200FT.

Changes: TITLE, RNP AR NOTES, RNAV (RNP) to RNP AR BRMGN04-172

DO NOT USE FOR NAVIGATION

Prepared by GE Aviation

