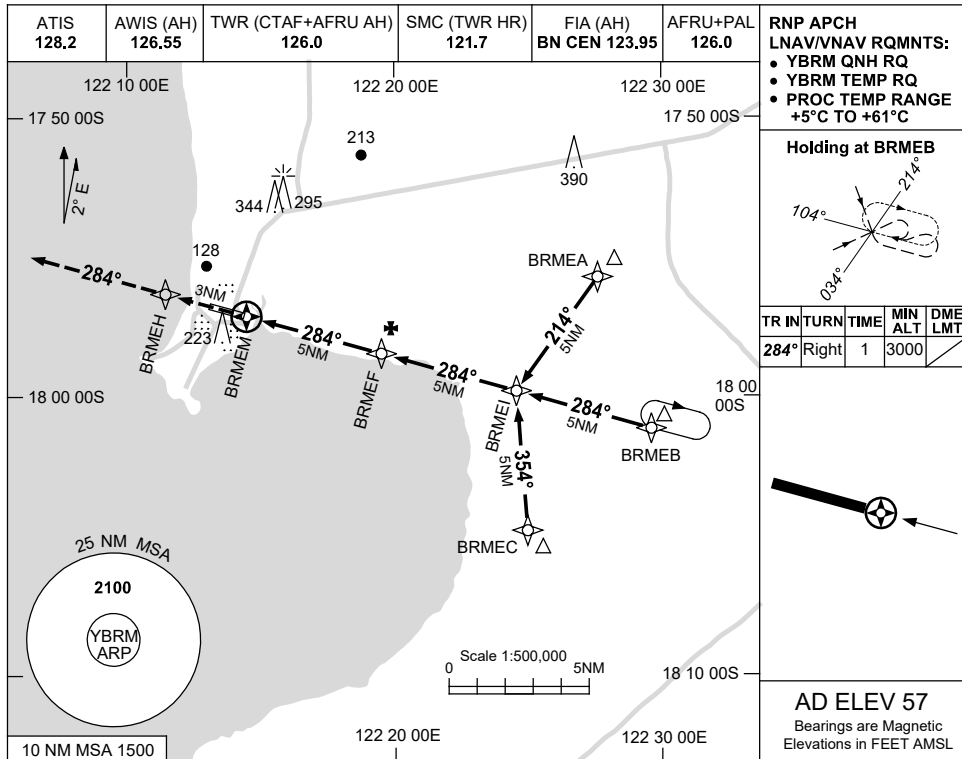


USE QNH

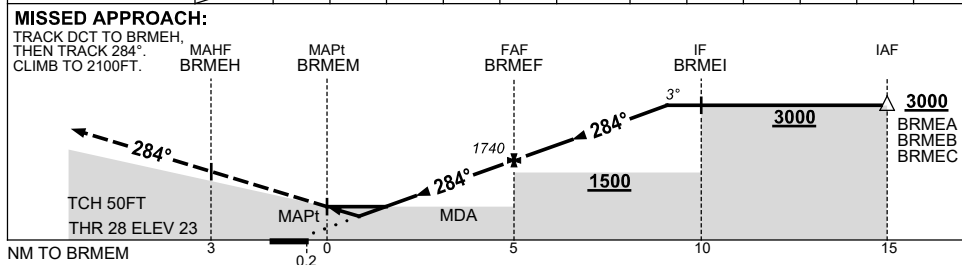
RNP Z RWY 28

BROOME/INTL, WA (YBRM)

8 SEP 2022



NM TO NEXT WPT	BRMEM	0.8	1.4	2	3	4	BRMEF	1	2	3	4		
ALT (3° APCH PATH)		410	600	780	1100	1420	1740	2060	2370	2690	3000		



NOTES

CATEGORY	A	B	C	D
LNAV/VNAV	410 (387-2.2)			
LNAV	600 (577-3.3)			
CIRCLING	650 (593-2.4)		840 (783-4.0)	850 (793-5.0)
ALTERNATE	(1093-4.4)		(1283-6.0)	(1293-7.0)

1. MAX IAS: INITIAL : 210KT.
2. HOLDING NOT CONTAINED IN CTA.

Changes: CHART TITLE, PBN SPECIFICATION BOX.

BRMGN02-172