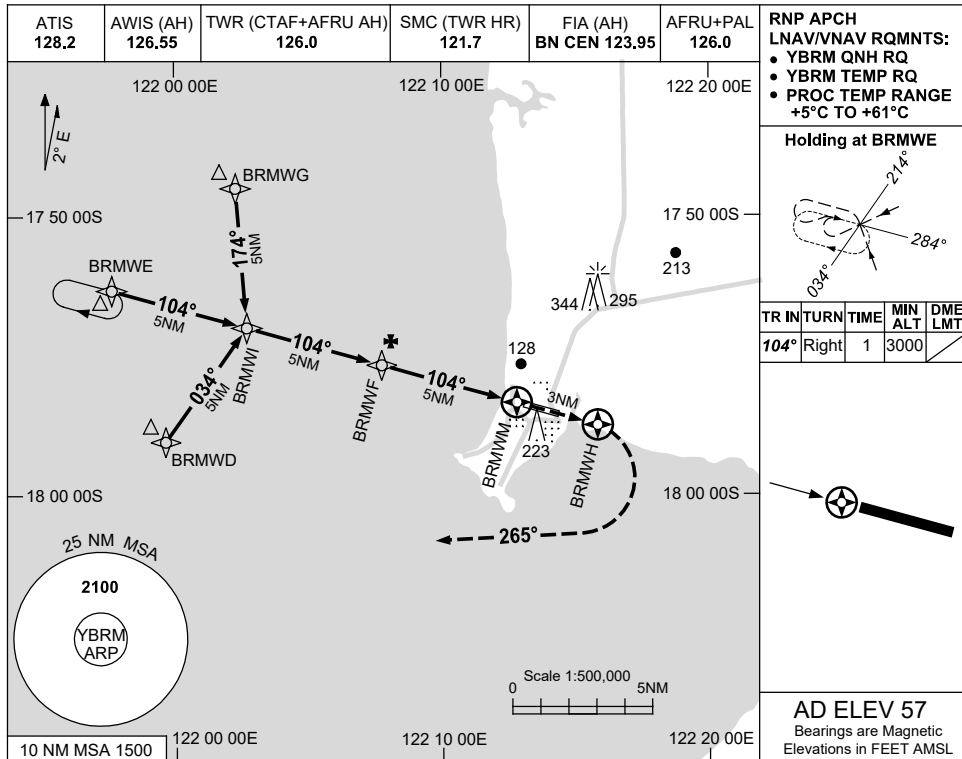


USE QNH

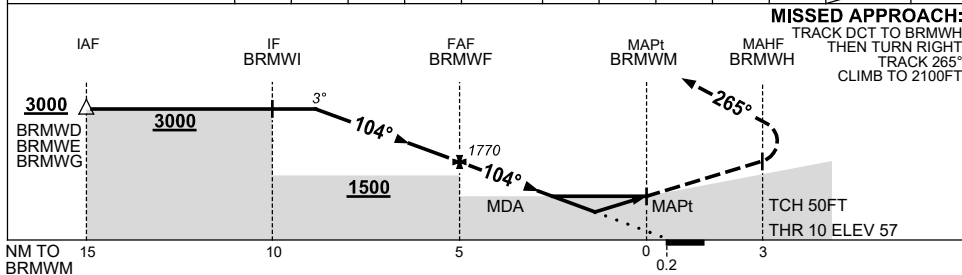
RNP Z RWY 10

**BROOME/INTL, WA (YBRM)**

8 SEP 2022



NM TO NEXT WPT	3.9	3	2	1	BRMWF	4	3	2	1.3	0.7	BRMWM
ALT (3° APCH PATH)	3000	2720	2400	2090	1770	1450	1130	810	600	410	



**NOTES**

CATEGORY	A	B	C	D
LNAV/VNAV	410 (353-2.0)			
LNAV	600 (543-3.1)			
CIRCLING	650 (593-2.4)	840 (783-4.0)	850 (793-5.0)	
ALTERNATE	(1093-4.4)	(1283-6.0)	(1293-7.0)	

1. MAX IAS:  
INITIAL : 210KT.
2. HOLDING NOT  
CONTAINED IN  
CTA.

Changes: CHART TITLE, PBN SPECIFICATION BOX.

BRMGN01-172