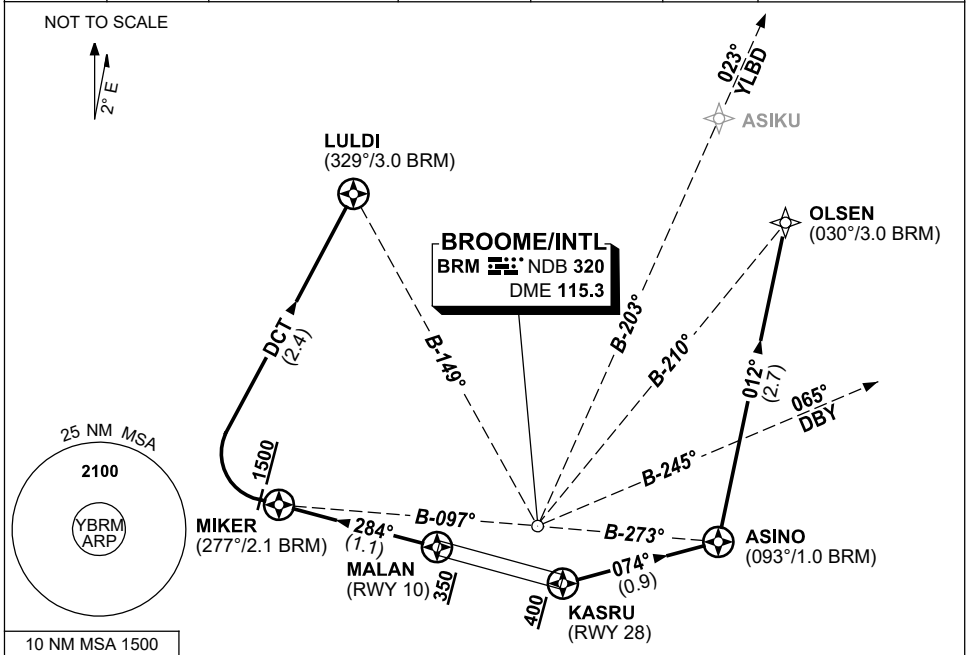


**STANDARD INSTRUMENT DEPARTURES (SID)
BROOME CAT H DEPARTURE (RNAV) RWY 10 & 28
BROOME/INTL, WA (YBRM)**

16 JUN 2022

ATIS 128.2	AWIS (AH) 126.55	TWR (CTAF+AFRU AH) 126.0	SMC (TWR HR) 121.7	FIA (AH) BN CEN 123.95	AFRU+PAL 126.0	Bearings are Magnetic Elevations in FEET AMSL
----------------------	----------------------------	------------------------------------	------------------------------	----------------------------------	--------------------------	--



10 NM MSA 1500

**RWY 28
LULDI ONE (RNAV) DEPARTURE
CAT H ONLY GRAD 5.0%**

- FATO RWY 28 at intersection TWY G
- Proceed visually to MALAN
- Initial Departure Fix MALAN
Cross MALAN AT or ABV 350ft
- Track 284° to MIKER
- AT or ABV 1500ft, but not before MIKER turn RIGHT
- Track DCT to LULDI (approx. 015°)
- After passing LULDI, track to intercept ATC cleared route by 5 DME

**RWY 10
ASINO ONE (RNAV) DEPARTURE
CAT H ONLY GRAD 5.0%**

- FATO RWY 10 at intersection TWY F2
 - Proceed visually to KASRU
 - Initial Departure Fix KASRU
Cross KASRU AT or ABV 400ft
 - Turn LEFT, track 074° to ASINO
 - Track to intercept ATC cleared route by 5 DME
- For OLSEN
- Turn LEFT, track 012° to OLSEN
 - Track to intercept ATC cleared route by 5 DME

COMMUNICATIONS FAILURE PROCEDURE

On recognition of communications failure

- Squawk 7600
- Maintain last ATC assigned track for two minutes, and if necessary, climb to a minimum safe altitude to maintain terrain clearance, then
- Proceed in accordance with the latest ATC route clearance acknowledged.

Changes: MAGNETIC TRACKS, Editorial.

BRMDP01-171