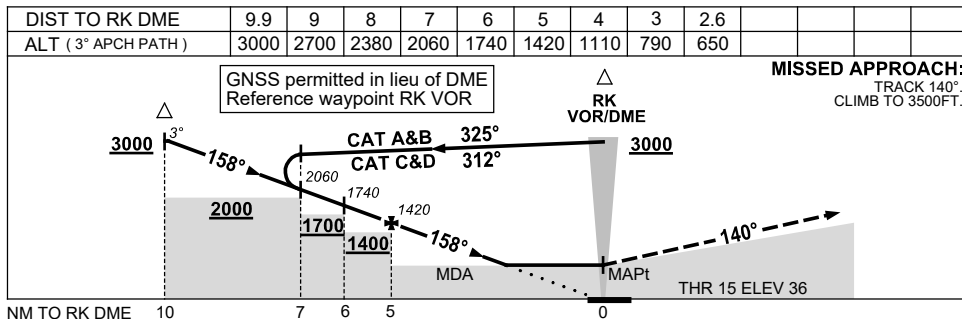
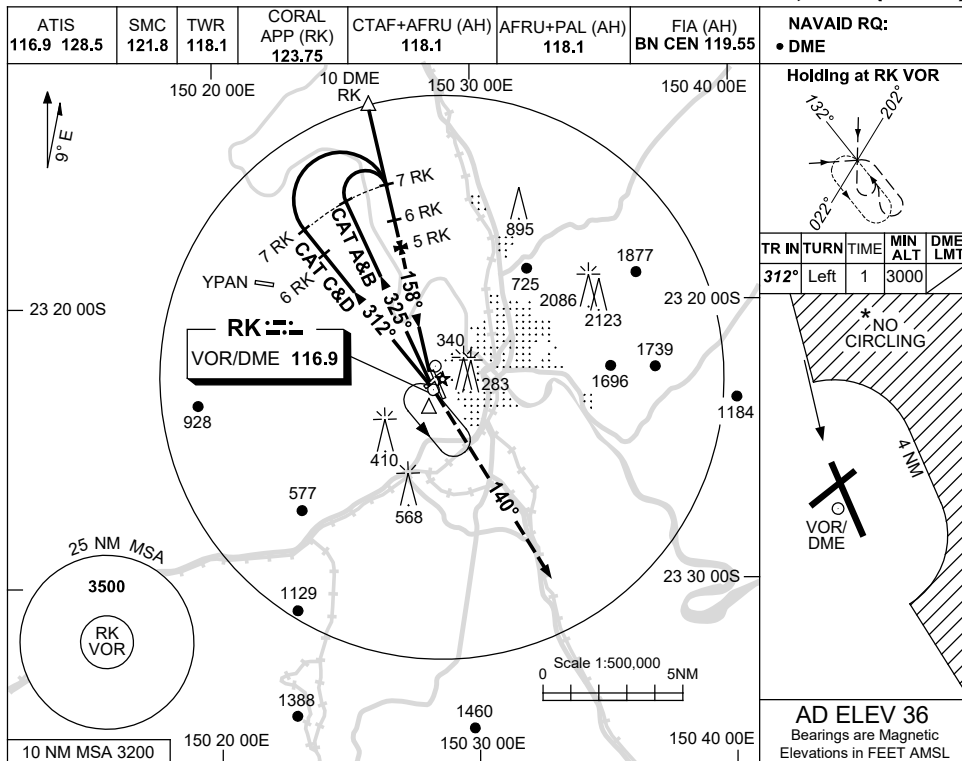


USE QNH

VOR RWY 15

1 DEC 2022

ROCKHAMPTON, QLD (YBRK)



CATEGORY	A	B	C	D
S-I VOR/DME	650 (614-3.5)			
CIRCLING*	840 (804-2.4)		1080 (1044-4.0)	1080 (1044-5.0)
ALTERNATE	(1304-4.4)		(1544-6.0)	(1544-7.0)

- NOTES**
- MAX IAS:
INITIAL : 210KT.
HOLDING: 210KT.
 - * NO CIRCLING BEYOND 4 NM EAST OF RWY 15/33.

Changes: CORAL APP FREQUENCY.

BRKVO01-173