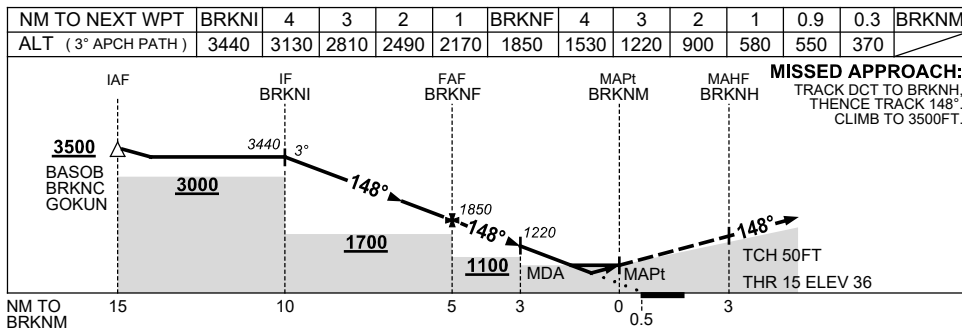
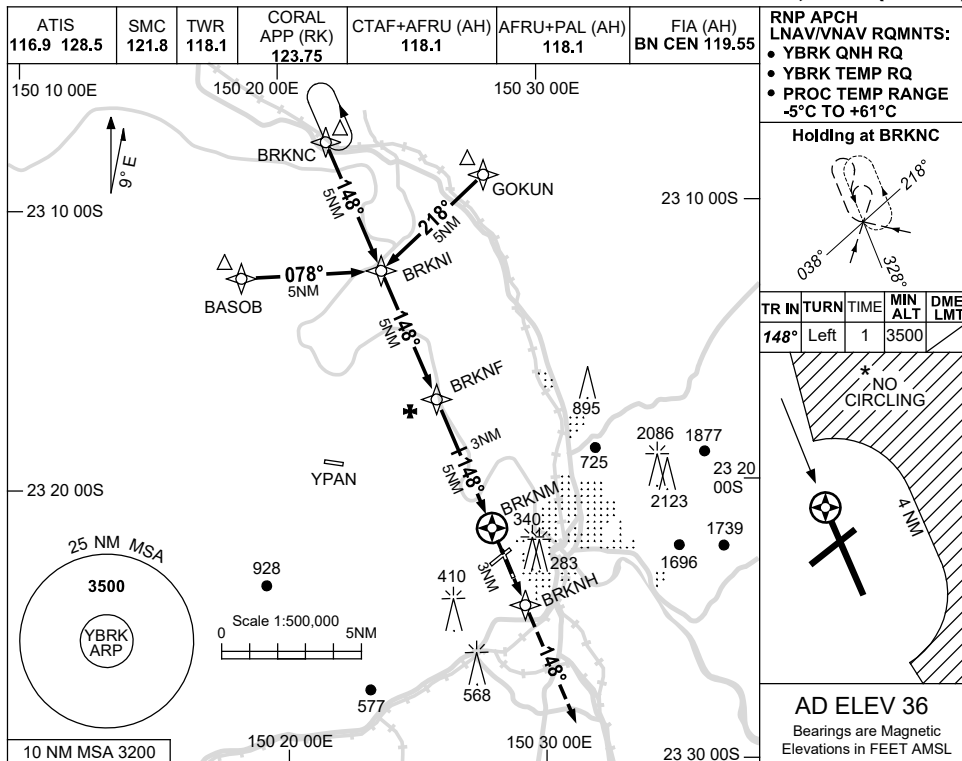


USE QNH

RNP RWY 15

1 DEC 2022

ROCKHAMPTON, QLD (YBRK)



NOTES

| CATEGORY | A | B | C | D |
|------------|---------------|---|-----------------|-----------------|
| LNAV/VNAV | | | 370 (334-1.9) | |
| LNAV | | | 550 (514-2.9) | |
| CIRCLING * | 840 (804-2.4) | | 1080 (1044-4.0) | 1080 (1044-5.0) |
| ALTERNATE | (1304-4.4) | | (1544-6.0) | (1544-7.0) |

1. MAX IAS:
 INITIAL : 210KT.
 *2. NO CIRCLING
 BEYOND 4 NM
 EAST OF RWY 15/33.
 3. HOLDING NOT
 CONTAINED IN CTA.

Changes: CORAL APP FREQUENCY.

BRKGN01-173