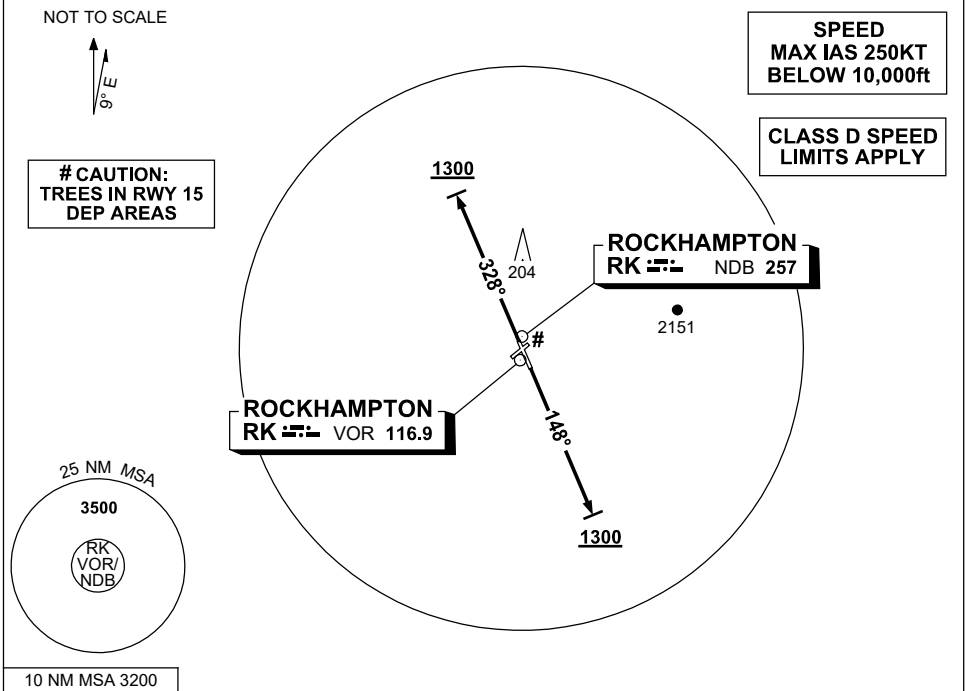


**STANDARD INSTRUMENT DEPARTURES (SID)
ROCKHAMPTON THREE DEPARTURE (RADAR) RWY 15 & 33
ROCKHAMPTON, QLD (YBRK)**

1 DEC 2022

ATIS 116.9 128.5	SMC 121.8	TWR 118.1	CORAL APP (RK) 123.75	CTAF+AFRU (AH) 118.1	AFRU+PAL (AH) 118.1	FIA (AH) BN CEN 119.55	Bearings are Magnetic Elevations in FEET AMSL
---------------------	--------------	--------------	-----------------------------	-------------------------	------------------------	---------------------------	--



ROCKHAMPTON THREE DEPARTURE (RADAR)

RWY 15

- GRAD 3.3%
- Track 148°
- AT 1300ft turn to assigned heading or track

RWY 33

- GRAD 3.4% to 2500ft, then 3.3%
- Track 328°
- AT 1300ft turn to assigned heading or track

COMMUNICATIONS FAILURE PROCEDURE

On recognition of communications failure

- Squawk 7600
- Maintain last assigned vector for two minutes, and
- CLIMB IF NECESSARY TO MINIMUM SAFE ALTITUDE, to maintain terrain clearance, then
- proceed in accordance with the latest ATC route clearance acknowledged.

Changes: CORAL APP FREQUENCY, Editorial.

BRKDP01-173