

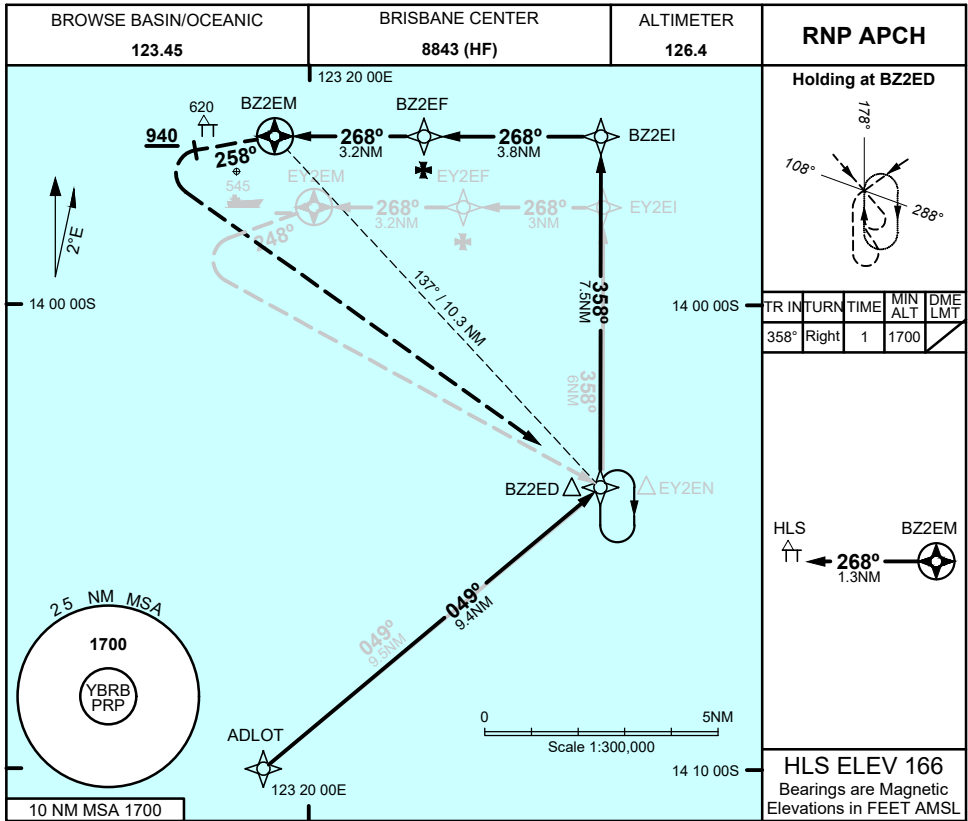
FOR CASA APPROVED OPERATORS ONLY

USE QNH

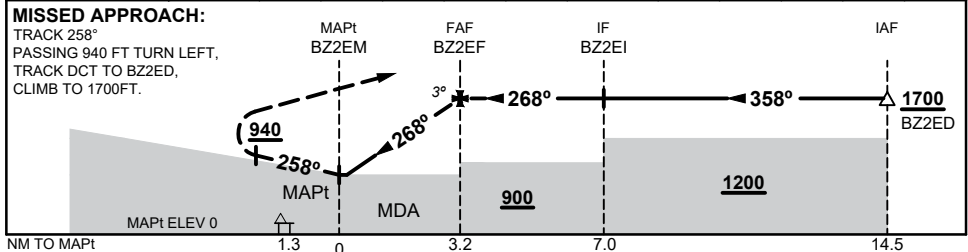
RNP Z 268

1 DEC 2022

BROWSE BASIN, WA (YBRB)



NM TO NEXT WPT	BZ2EM	0.2	0.7	1	2	3	BZ2EF				
ALT (3° APCH PATH)		750	900	1000	1320	1640	1700				



CATEGORY	H
YBRB QNH (NON-VAA)	750 (750 - 2.1)
AREA QNH (NON-VAA)	900 (900 - 2.1)
ALTERNATE	(1400 - 4.1)

- NOTES**
1. MAX IAS:
- HOLDING: 90 KT
 2. PRP (S13 57 09, E123 18 23)
 3. HLS (S13 56 23, E123 17 53)
 4. PRP EQUIVALENT TO ARP/HRP

Changes: LOGO, Editorial

BRBG03-173

FOR CASA APPROVED OPERATORS ONLY

