

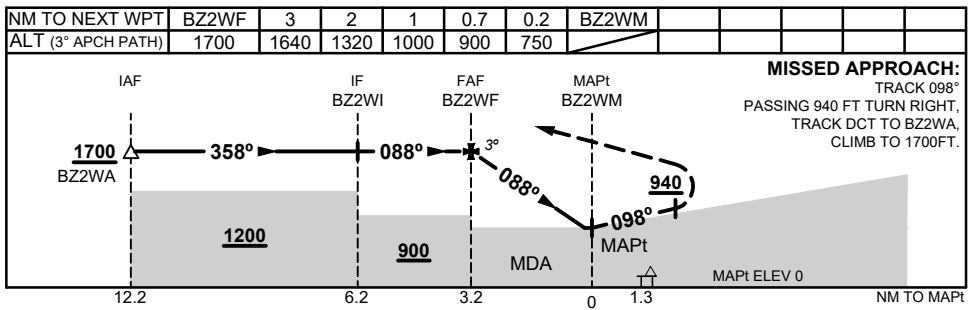
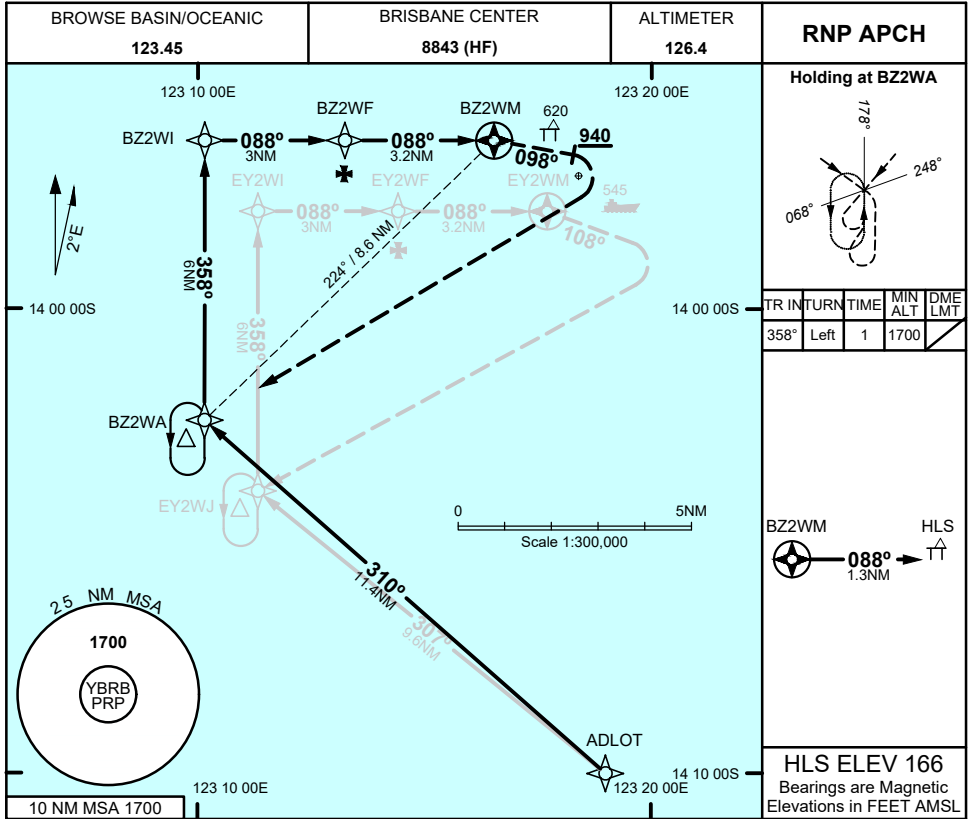
# FOR CASA APPROVED OPERATORS ONLY

## USE QNH

RNP Z 088

1 DEC 2022

**BROWSE BASIN, WA (YBRB)**



CATEGORY	H
YBRB QNH (NON-VAA)	<b>750</b> (750 - 2.1)
AREA QNH (NON-VAA)	<b>900</b> (900 - 2.1)
ALTERNATE	(1400 - 4.1)

- NOTES**
1. MAX IAS:  
- HOLDING: 90 KT
  2. PRP (S13 57 09, E123 18 23)
  3. HLS (S13 56 23, E123 17 53)
  4. PRP EQUIVALENT TO  
ARP/HRP

Changes: LOGO, Editorial

BRBG01-173

# FOR CASA APPROVED OPERATORS ONLY

