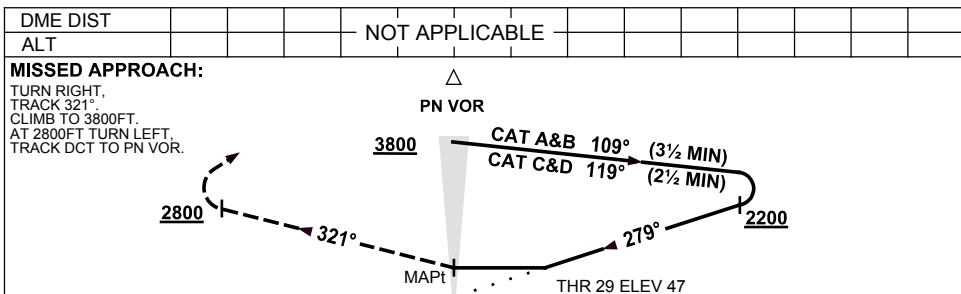
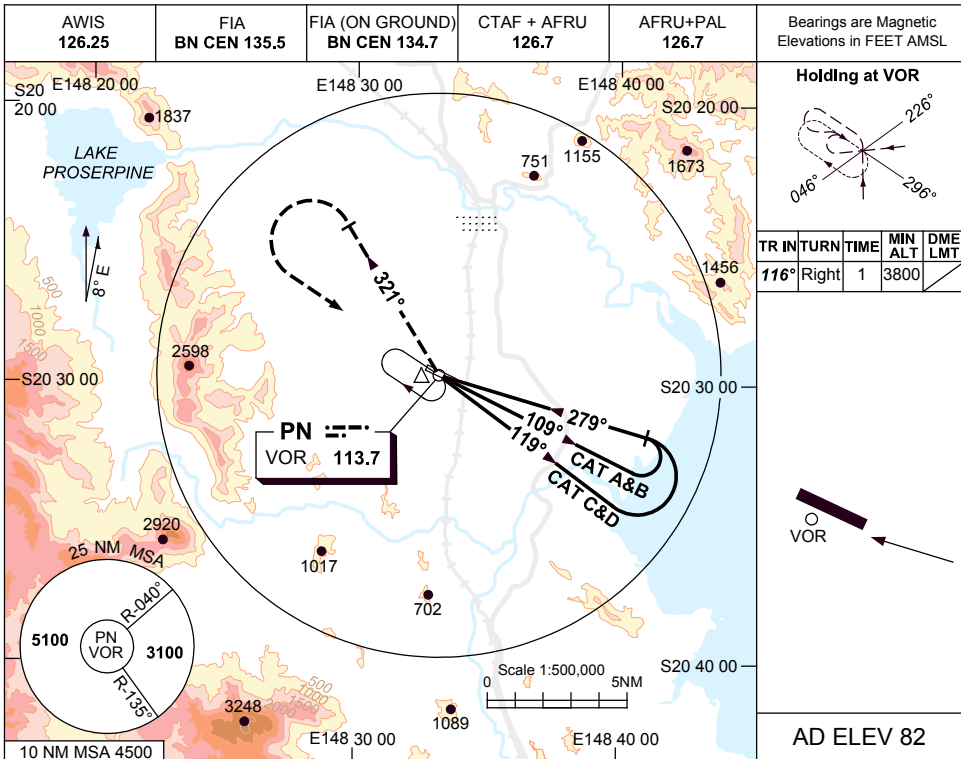


**USE QNH  
PROSERPINE/WHITSUNDAY COAST, QLD (YBPN)**

VOR RWY 29

**9 NOV 2017**



**NOTES**

CATEGORY	A	B	C	D
S-I VOR	<b>660</b> (613-3.5)			
CIRCLING	<b>800</b> (718-2.4)	<b>1030</b> (948-4.0)	<b>1420</b> (1338-5.0)	
ALTERNATE	(1218-4.4)	(1448-6.0)	(1838-7.0)	

1. MAX IAS:  
INITIAL :  
CAT A&B 140KT.  
CAT C&D 210KT.
2. COLOUR: SEE SPEC NOTICES.

Changes: CAT D, CIRCLING & ALT MNM.

BPNV003-153