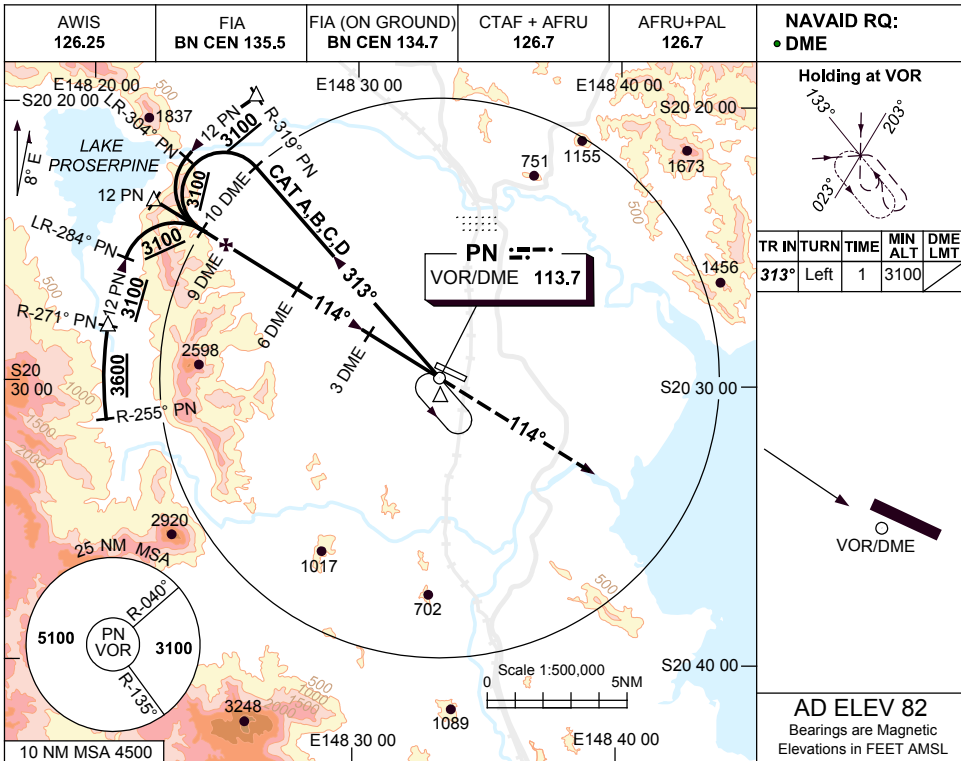
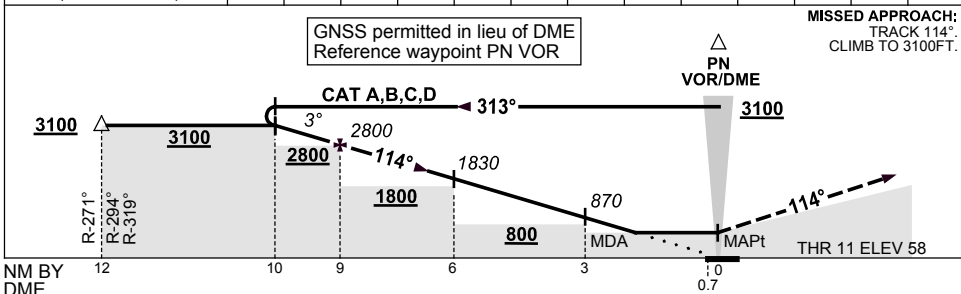


**USE QNH** VOR RWY 11  
**PROSERPINE/WHITSUNDAY COAST, QLD (YBPN)**

**9 NOV 2017**



DIST BY DME	10	9	8	7	6	5	4	3	2.4				
ALT (3° APCH PATH)	3100	2800	2470	2150	1830	1510	1190	870	680				



**NOTES**

CATEGORY	A	B	C	D
S-I VOR/DME	<b>680 (622-3.5)</b>			
CIRCLING	<b>800 (718-2.4)</b>	<b>1030 (948-4.0)</b>	<b>1420 (1338-5.0)</b>	
ALTERNATE	(1218-4.4)	(1448-6.0)	(1838-7.0)	

1. MAX IAS: INITIAL : 210KT.
2. COLOUR: SEE SPEC NOTICES.

Changes: CAT D, CIRCLING & ALTN MNM.

BPNV001-153