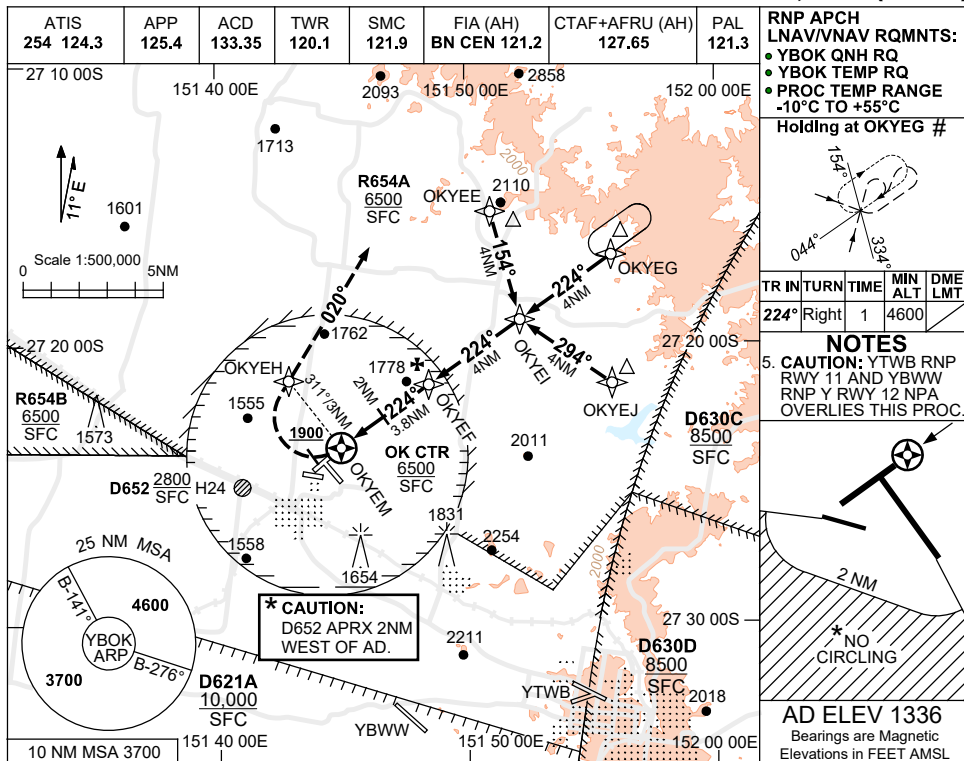
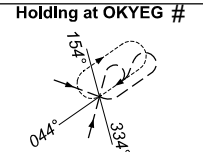


16 JUN 2022

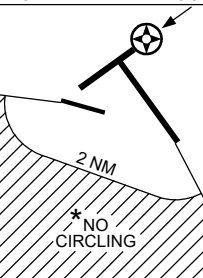


RNP APCH LNAV/VNAV RQMNTS:
 ● YBOK QNH RQ
 ● YBOK TEMP RQ
 ● PROC TEMP RANGE
 -10°C TO +55°C



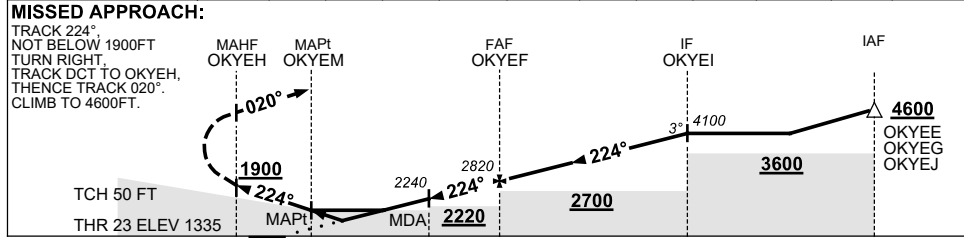
TR IN	TURN	TIME	MIN ALT	DME LMT
224°	Right	1	4600	

NOTES
 5. CAUTION: YTWB RNP RWY 11 AND YBWW RNP Y RWY 12 NPA OVERLIES THIS PROC.



AD ELEV 1336
 Bearings are Magnetic Elevations in FEET AMSL

NM TO NEXT WPT	OKYEM	0.8	1.4	2	3	OKYEF	1	2	3	OKYEJ		
ALT (3° APCH PATH)		1850	2060	2240	2560	2820	3140	3450	3770	4100		



- NOTES**
- MAX IAS:
INITIAL : 200KT.
MAP TURN: 130KT.
 - HLDG AREA NOT CONTAINED WITHIN RESTD AREAS WHEN ACT.
 - NO CIRCLING SW OF RWY 09/27 AND RWY 14/32 BEYOND 2NM.
 - PROC MAY NOT BE CONTAINED IN CTA.

CATEGORY	A	B	C	D
LNAV/VNAV	1850 (515-2.9)		NOT APPLICABLE	
LNAV	2060 (724-4.1)			
CIRCLING *	2170 (834-2.4)			
ALTERNATE	(1334-4.4)			

Changes: OK CTR, R654A AND R654B, Editorial.

BOKGN02-171