

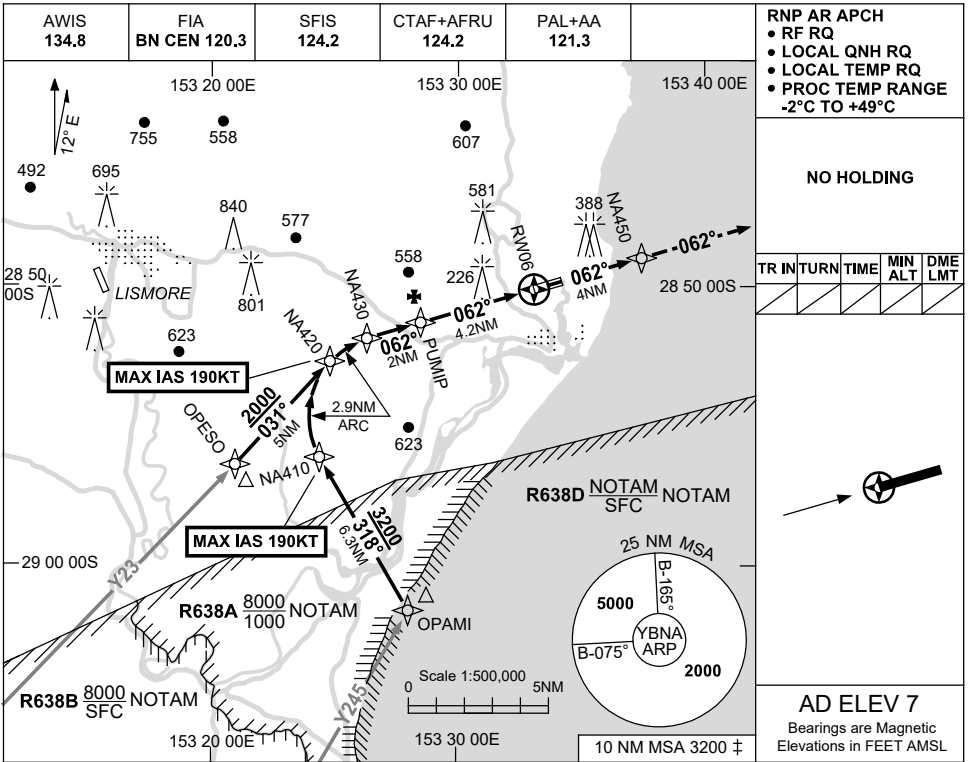
FOR CASA APPROVED OPERATORS ONLY

USE QNH

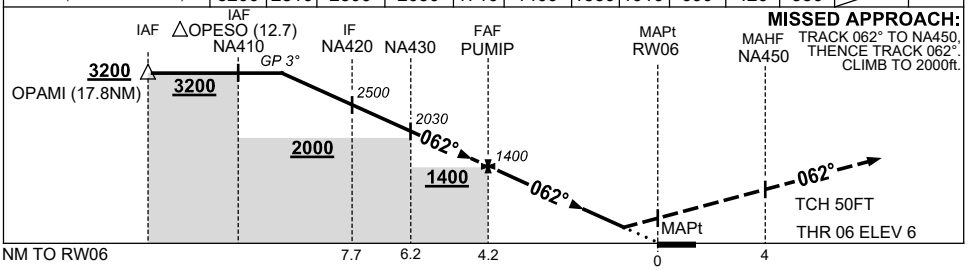
RNP X RWY 06 (AR)

BALLINA/BYRON GATEWAY, NSW (YBNA)

21 MAR 2024



NM TO NEXT WPT	2.2	1	NA420	NA430	1	PUMIP	4	3	2	1.1	0.9	RWY06
ALT (3° APCH PATH)	3200	2810	2500	2030	1710	1400	1330	1010	690	420	350	



NOTES

- MAX IAS:
RF TURN: 190KT.
- 10 NM MSA IS A COMBINED AREA FOR YBNA, YLIS.
CAUTION:
- INITIAL SEGMENTS OVERLAY YLIS RNP RWY 33 PROC.

CATEGORY	A	B	C	D
RNP (0.3)		420 (414-2.3)		NOT AUTHORISED
RNP (0.1)		350 (344-1.9)		
CIRCLING	NOT AUTHORISED			
ALTERNATE	(1203-4.4)		(1423-6.0)	

Changes: HANG GLIDER SYMBOL REMOVED, Editorial.

BNAGN03-178