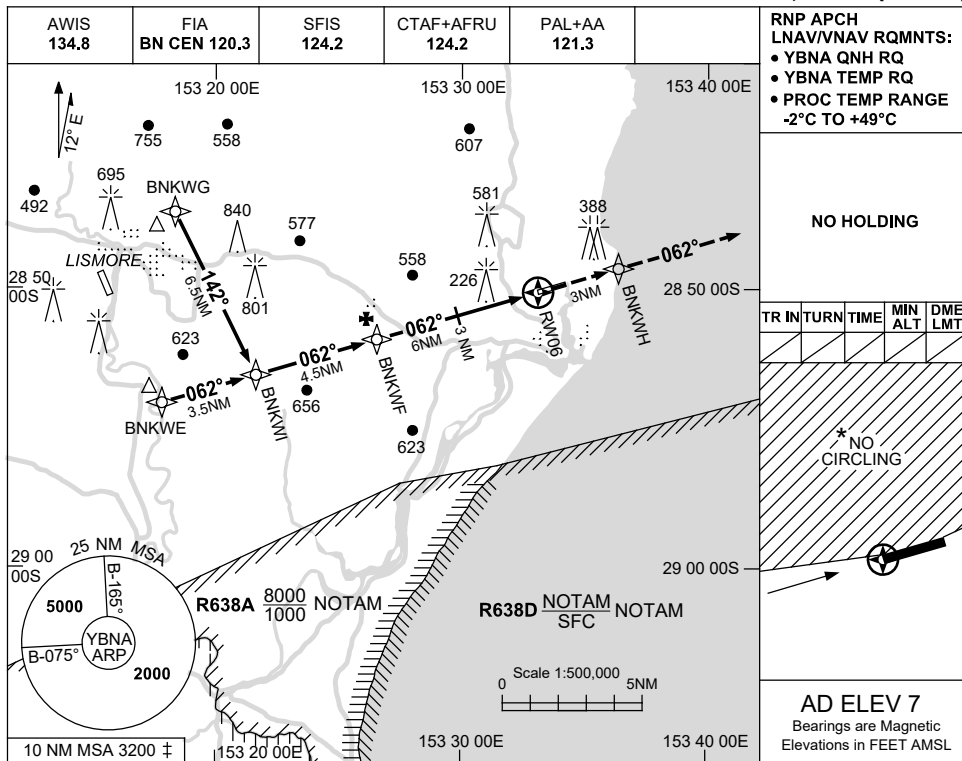


USE QNH
BALLINA/BYRON GATEWAY, NSW (YBNA)

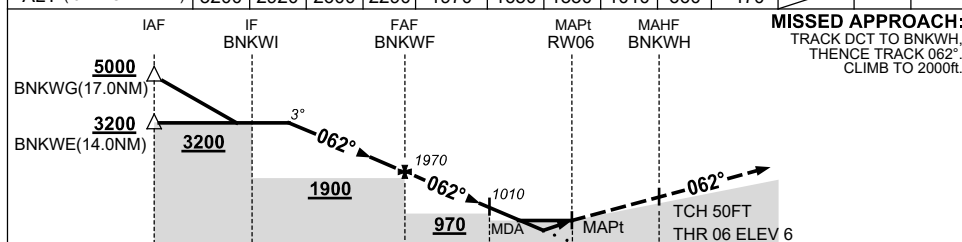
RNP Z RWY 06

21 MAR 2024



RNP APCH LNAV/VNAV RQMNTS: • YBNA QNH RQ • YBNA TEMP RQ • PROC TEMP RANGE -2°C TO +49°C				
NO HOLDING				
TR	IN	TURN	TIME	DME LMT
* NO CIRCLING				
AD ELEV 7 Bearings are Magnetic Elevations in FEET AMSL				

NM TO NEXT WPT	3.9	3	2	1	BNKWF	5	4	3	1.9	1.3	RW06		
ALT (3° APCH PATH)	3200	2920	2600	2290	1970	1650	1330	1010	660	470			



NOTES

- MAX IAS:
INITIAL : 210KT.
- 10 NM MSA IS A COMBINED AREA FOR YBNA, YLIS.
- NO CIRCLING NTH OF RWY 06/24.
- CAUTION:**
PROC OVERLAYS LISMORE PROCS.

CATEGORY	A	B	C	D
LNAV/VNAV		470 (464-2.6)		NOT APPLICABLE
LNAV		660 (653-3.7)		
CIRCLING *	790 (783-2.4)		1030 (1023-4.0)	
ALTERNATE	(1283-4.4)		(1523-6.0)	

Changes: HANG GLIDER SYMBOL REMOVED, Editorial.

BNAGN01-178