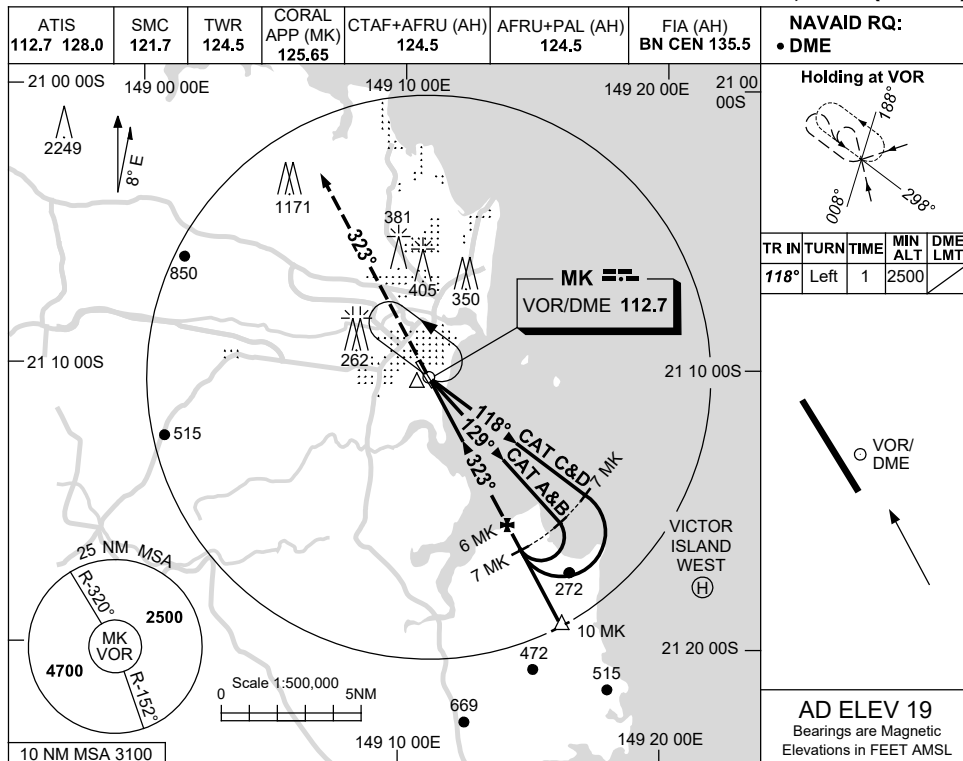


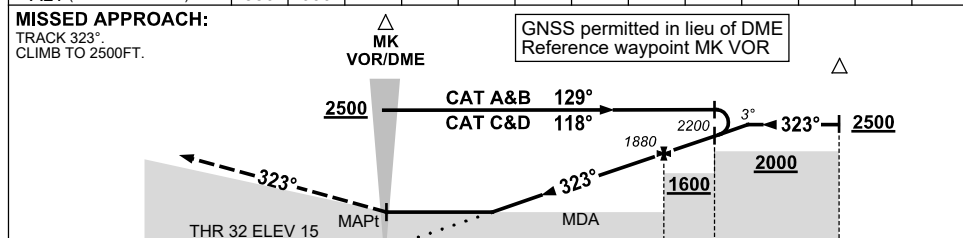
USE QNH

VOR RWY 32
MACKAY, QLD (YBMK)

1 DEC 2022



DIST TO MK DME	1.8	2	3	4	5	6	7	7.9				
ALT (3° APCH PATH)	550	600	920	1240	1560	1880	2200	2500				



NM TO MK DME: 0, 6, 7, 10

NOTES

1. MAX IAS:
HOLDING: 200KT.
INITIAL : 210KT.
2. **CAUTION:** PROC IS OVERLAID BY VICTOR ISLAND EAST (YVIE) & WEST (YVIW) PROCS. ACFT SEPARATION NOT ASSURED.
3. HLDG NOT CONTAINED IN CTA.

CATEGORY	A	B	C	D
S-I VOR/DME	550 (531-3.0)			
CIRCLING	710 (691-2.4)	900 (881-4.0)	1160 (1141-5.0)	
ALTERNATE	(1191-4.4)	(1381-6.0)	(1641-7.0)	

Changes: CORAL APP FREQUENCY.

BMKVO02-173