

**STANDARD INSTRUMENT DEPARTURES (SID)
MACKAY TWO DEPARTURE (RADAR)
MACKAY, QLD (YBMK)**

1 DEC 2022

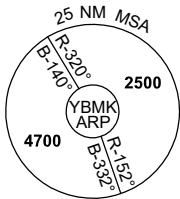
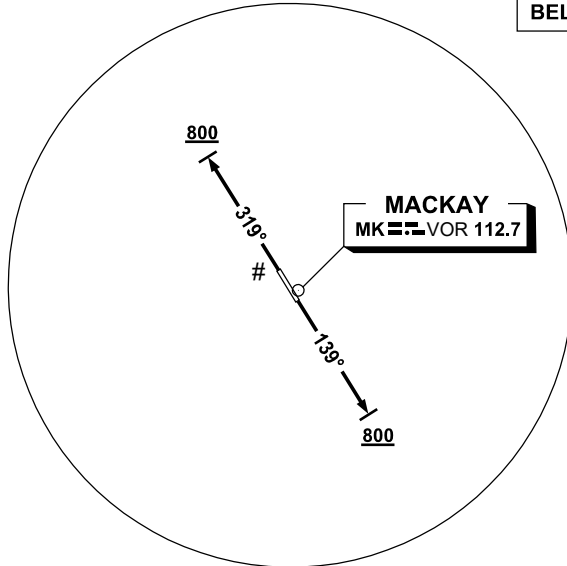
ATIS 112.7 128.0	SMC 121.7	TWR 124.5	CORAL APP (MK) 125.65	CTAF+AFRU (AH) 124.5	AFRU+PAL (AH) 124.5	FIA (AH) BN CEN 135.5	Bearings are Magnetic Elevations in FEET AMSL
---------------------	--------------	--------------	-----------------------------	-------------------------	------------------------	--------------------------	--

NOT TO SCALE



**SPEED
MAX IAS 250KT
BELOW 10,000FT**

CAUTION:
1. TREES IN
RWY 32 DEP
AREA.



10 NM MSA 3100

MACKAY TWO DEPARTURE (RADAR)

RWY 14

- GRAD 3.3%
- Track 139°
- AT or ABV 800ft turn to assigned heading or track

RWY 32

- GRAD 3.7% to 800ft, then 3.3%
- Track 319°
- AT or ABV 800ft turn to assigned heading or track

COMMUNICATIONS FAILURE PROCEDURE

On recognition of communications failure

- Squawk 7600
- Maintain last assigned vector for two minutes, and
- CLIMB IF NECESSARY TO MINIMUM SAFE ALTITUDE, to maintain terrain clearance, then
- proceed in accordance with the latest ATC route clearance acknowledged.

Changes: CORAL APP FREQUENCY, Editorial.

BMKDP01-173