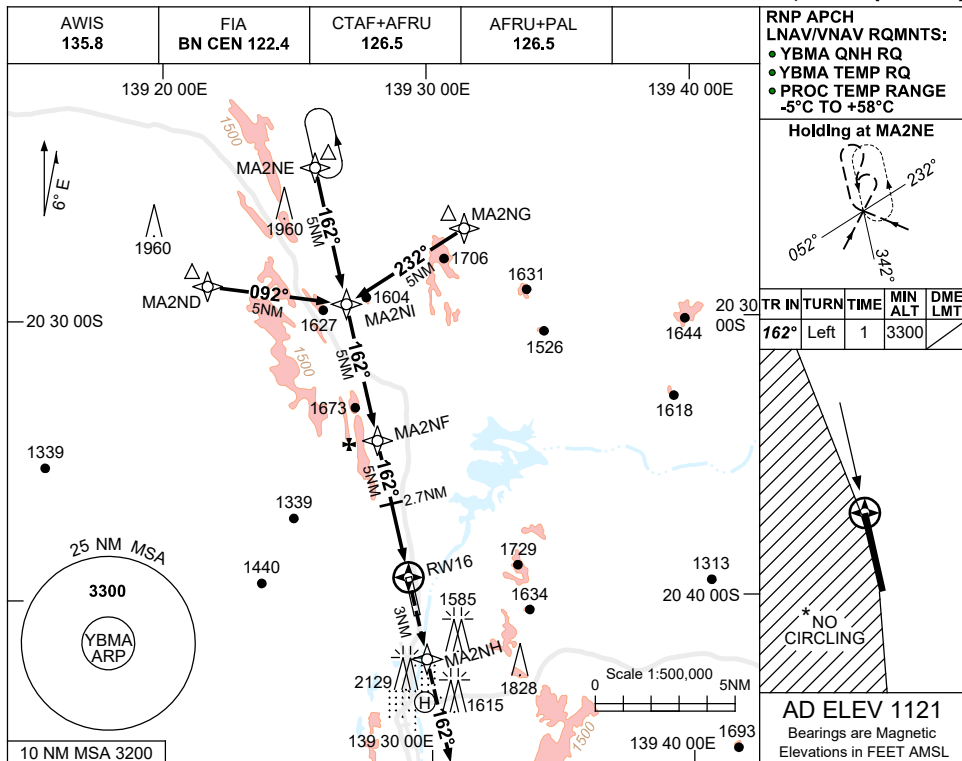


USE QNH

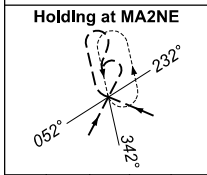
RNP Z RWY 16

15 JUN 2023

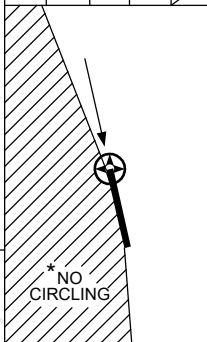
MOUNT ISA, QLD (YBMA)



RNP APCH
LNAV/VNAV RQMNTS:
● YBMA QNH RQ
● YBMA TEMP RQ
● PROC TEMP RANGE
-5°C TO +58°C

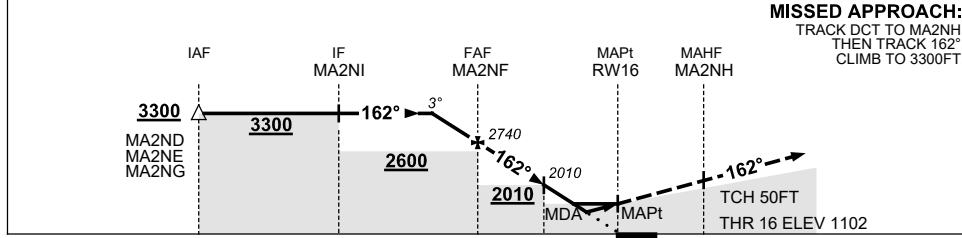


TR	IN	TURN	TIME	MIN ALT	DME LMT
162°	Left	1	3300		



AD ELEV 1121
Bearings are Magnetic
Elevations in FEET AMSL

NM TO NEXT WPT	1.7	1	MA2NF	4	3	2.7	2.5	2	1.8	RW16
ALT (3° APCH PATH)	3300	3060	2740	2430	2110	2010	1940	1790	1740	



MISSED APPROACH:
TRACK DCT TO MA2NH,
THEN TRACK 162°
CLIMB TO 3300FT.

NM TO RW16	15	10	5	2.7	0	3
ALT	3300	2600	2010	1740		

CATEGORY	A	B	C	D
LNAV/VNAV		1740 (638-3.6)		
LNAV		1940 (838-4.8)		
CIRCLING *	2090 (969-2.4)		2450 (1329-4.0)	2450 (1329-5.0)
ALTERNATE	(1469-4.4)		(1829-6.0)	(1829-7.0)

- NOTES**
- MAX IAS:
INITIAL : 210KT.
 - NO CIRCLING WEST
OF RWY 16/34.
 - COLOUR: SEE
SPEC NOTICES.

Changes: Editorial.

BMAGN01-175