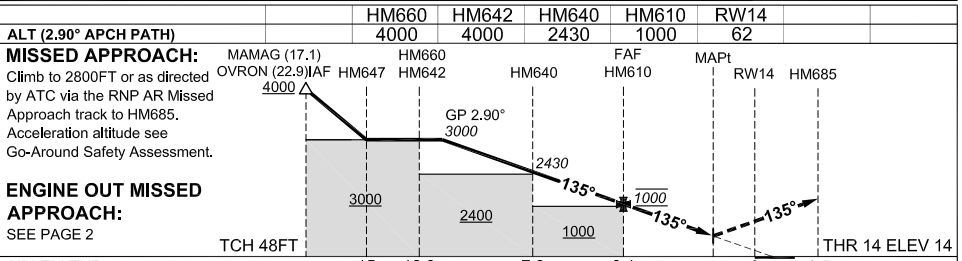
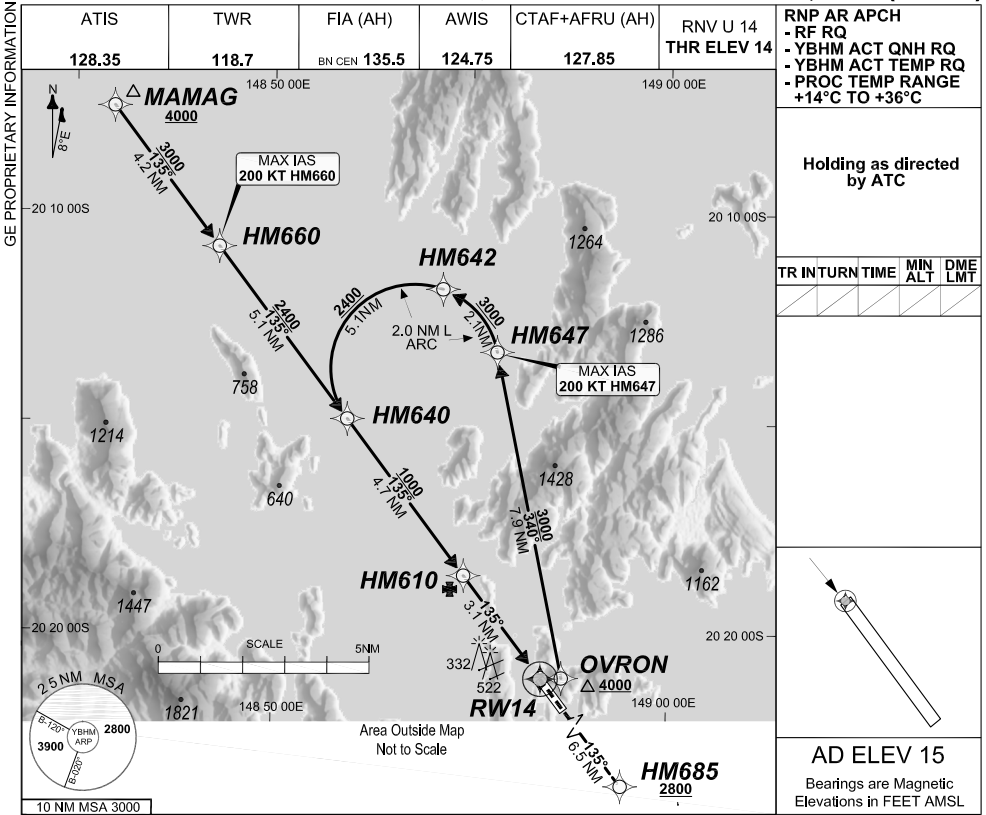


FOR CASA APPROVED
OPERATORS ONLY

24 MAR 2022

USE QNH

HAMILTON ISLAND, QLD (YBHM)



NOTES

1. PROC AVBL up to MLW.
2. Lateral transition to MAP must not be initiated prior to DA/H PSN.
3. APCH Path does not coincide with PAPI glide path 3°.
4. Transient yacht masts may infringe RWY 14 visual approach slope clearance.
5. See Engineering Report for Minimum MAP gradient (AE) to 2800 FT.

CATEGORY	A	B	C	D
RNP (0.30)	NOT APPLICABLE		DA(H) 653' (639')-3.6	
RNP ()	NOT APPLICABLE		DA(H) ()-. .	
RNP ()	NOT APPLICABLE		DA(H) ()-. .	
RNP ()	NOT APPLICABLE		DA(H) ()-. .	
CIRCLING			NOT AUTHORISED	

1. PROC AVBL up to MLW.
2. Lateral transition to MAP must not be initiated prior to DA/H PSN.
3. APCH Path does not coincide with PAPI glide path 3°.
4. Transient yacht masts may infringe RWY 14 visual approach slope clearance.
5. See Engineering Report for Minimum MAP gradient (AE) to 2800 FT.

202109301556 COPYRIGHT 2021 NAVERUS, INC. USA

Revision: From SUP H97/21, chart title

BHMGN05-170

DO NOT USE FOR NAVIGATION

Prepared by GE Aviation

