

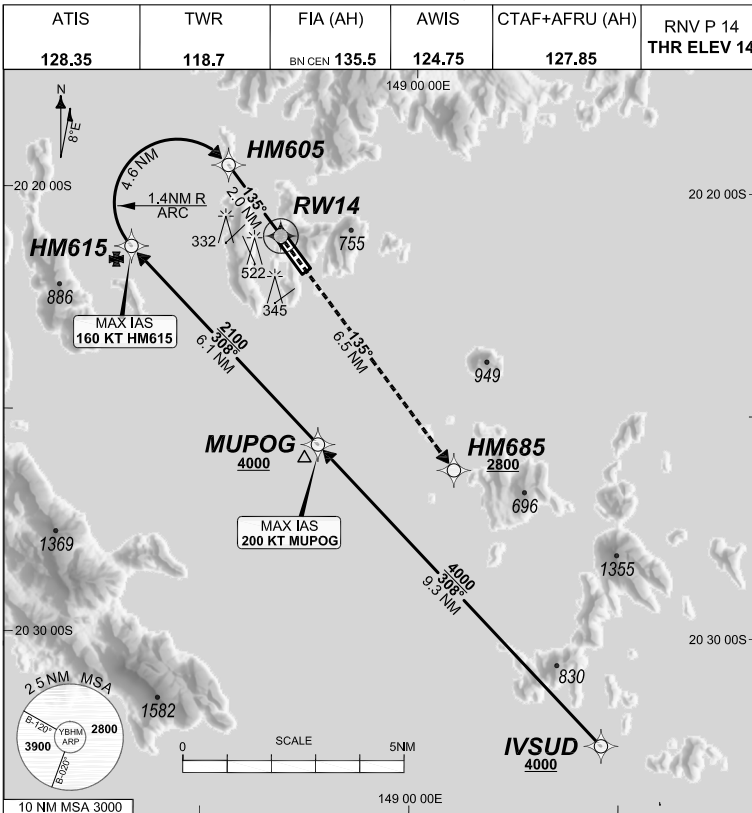
FOR CASA APPROVED OPERATORS ONLY

24 MAR 2022

USE QNH

HAMILTON ISLAND, QLD (YBHM)

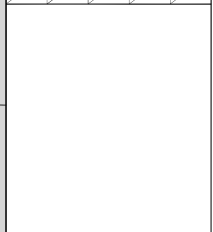
GE PROPRIETARY INFORMATION



ATIS	TWR	FIA (AH)	AWIS	CTAF+AFRU (AH)	RNP P 14 THR ELEV 14	RNP AR APCH - RF RQ - YBHM ACT QNH RQ - YBHM ACT TEMP RQ - PROC TEMP RANGE +14°C TO +36°C
128.35	118.7	BN CEN 135.5	124.75	127.85		

Holding as directed by ATC

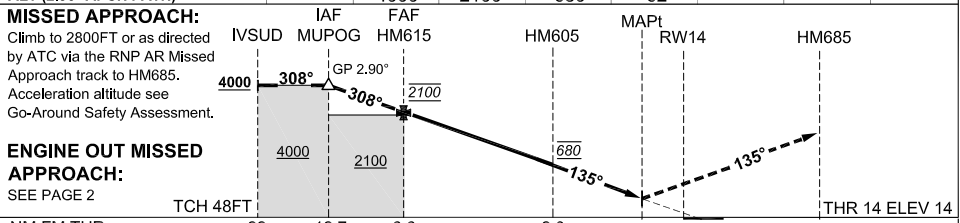
TR	INTURN TIME	MIN ALT	DME LMT
/	/	/	/



AD ELEV 15

Bearings are Magnetic Elevations in FEET AMSL

			MUPOG	HM615	HM605	RW14		
ALT (2.90° APCH PATH)			4000	2100	680	62		



NOTES

1. PROC AVBL up to MLW.
2. Lateral transition to MAP must not be initiated prior to DA/H PSN.
3. APCH Path does not coincide with PAPI glide path 3°.
4. Transient yacht masts may infringe RWY 14 visual approach slope clearance.
5. See Engineering Report for Minimum MAP gradient (AE) to 2800 FT.

CATEGORY	A	B	C	D
RNP (0.30)	NOT APPLICABLE		DA(H) 669' (655')-3.7	
RNP ()	NOT APPLICABLE		DA(H) () - .	
RNP ()	NOT APPLICABLE		DA(H) () - .	
RNP ()	NOT APPLICABLE		DA(H) () - .	
CIRCLING			NOT AUTHORISED	

202109301559 COPYRIGHT 2021 NAVERUS, INC. USA

Revision: From SUP H97/21, chart title

BHMG03-170

DO NOT USE FOR NAVIGATION

Prepared by GE Aviation

