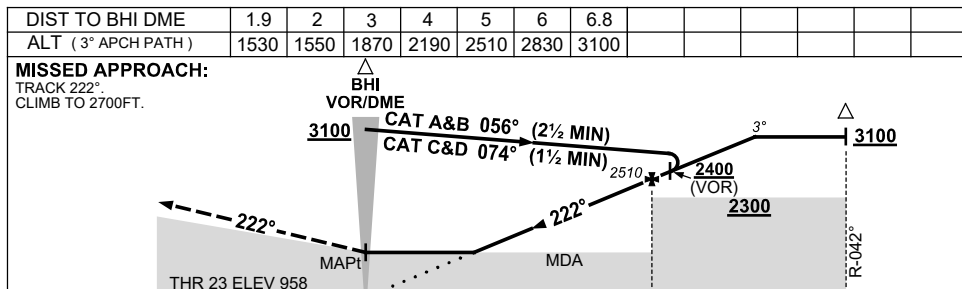
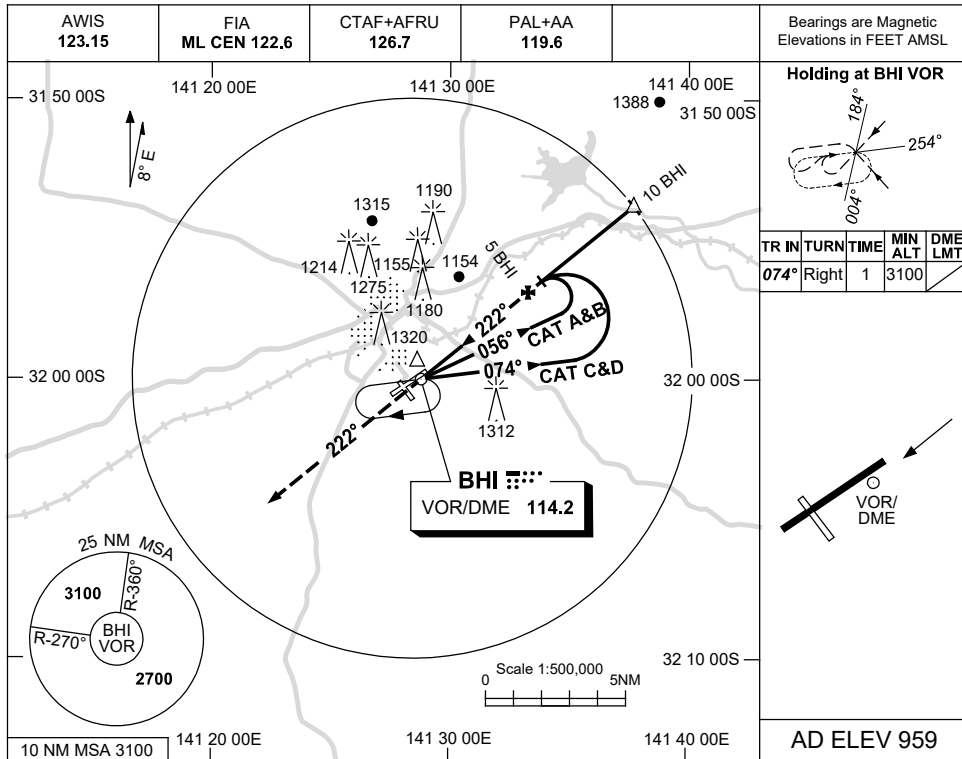


USE QNH

VOR RWY 23

**BROKEN HILL, NSW (YBHI)**

16 JUN 2022



NM TO BHI DME      0      5      10

**NOTES**

CATEGORY	A	B	C	D
S-I VOR		<b>1710 (751-4.3)</b>		
S-I VOR/DME		<b>1530 (571-3.2)</b>		
CIRCLING	<b>1720 (761-2.4)</b>		<b>1880 (921-4.0)</b>	<b>1880 (921-5.0)</b>
ALTERNATE	(1261-4.4)		(1421-6.0)	(1421-7.0)

1. MAX IAS:  
BASE TURN: 210KT
2. SCALLOPING MAY OCCUR ON FINAL.

Changes: PAL+AA.

BHIVO02-171