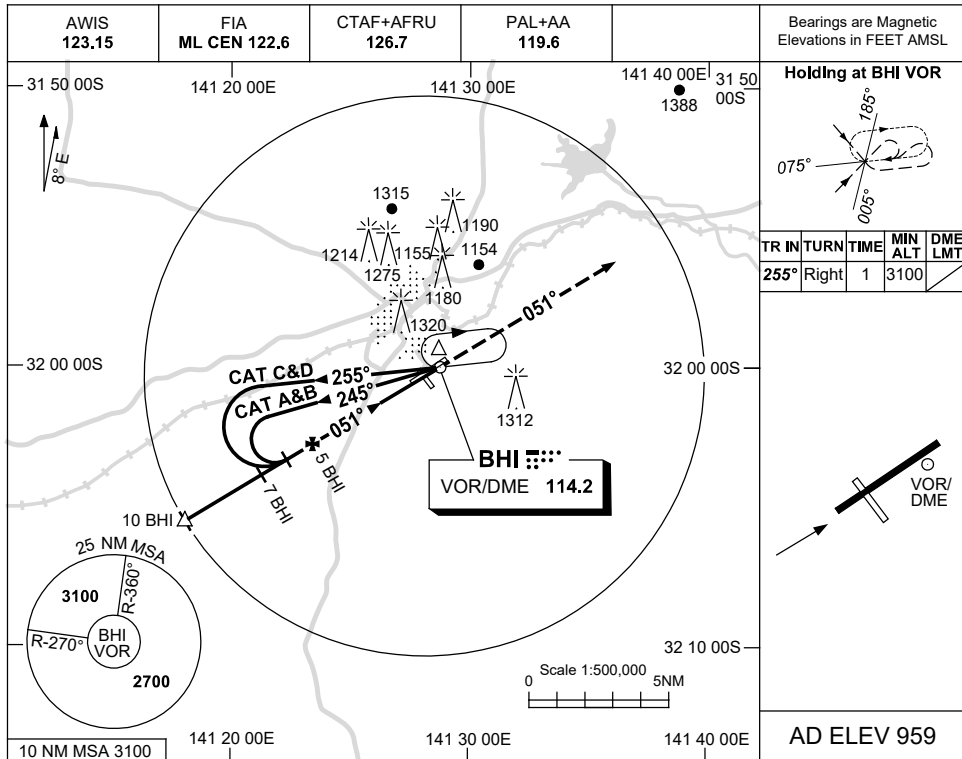


USE QNH

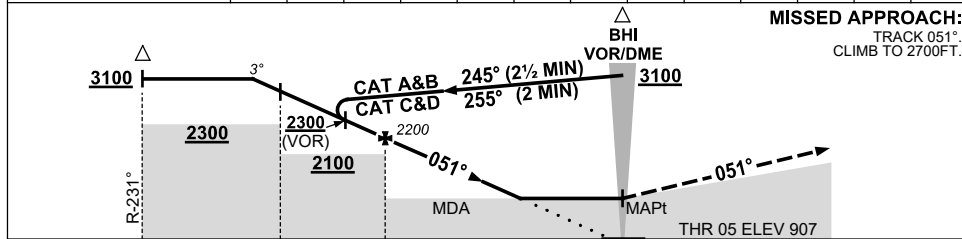
VOR RWY 05

BROKEN HILL, NSW (YBHI)

16 JUN 2022



DIST TO BHI DME	7.8	7	6	5	4	3	2.9						
ALT (3° APCH PATH)	3100	2840	2520	2200	1890	1570	1530						



NM TO BHI DME	10	7	5	0
---------------	----	---	---	---

NOTES

CATEGORY	A	B	C	D
S-I VOR		1580 (673-3.8)		
S-I VOR/DME		1530 (623-3.5)		
CIRCLING	1720 (761-2.4)		1880 (921-4.0)	1880 (921-5.0)
ALTERNATE	(1261-4.4)		(1421-6.0)	(1421-7.0)

1. MAX IAS:
BASE TURN: 210KT
2. SCALLOPING MAY OCCUR ON FINAL.

Changes: PAL+AA.

BHIVO01-171